

We empower  
college  
opportunity  
for all



COLLEGE  
POSSIBLE™  
OREGON



## The growing college degree divide

A student's future should be determined solely by their aspirations, motivation and effort, not by their family's income

Yet nationwide, there's a widening gap between the aspirations of students from under-represented communities who want to earn a college degree and the systemic, unfair barriers they face in achieving it.

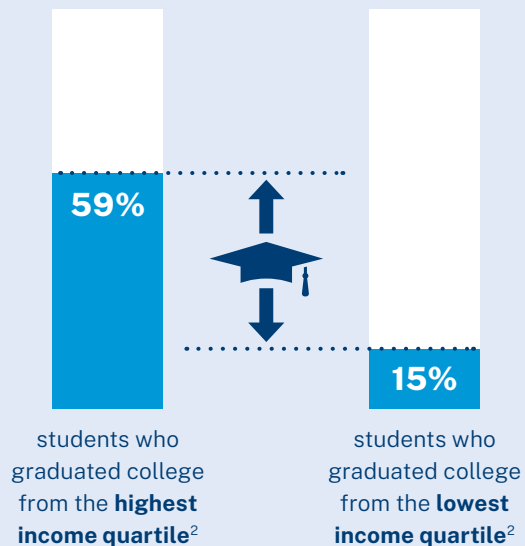
While there is no single cause, contributors to this "degree divide" include inequitable academic prep, fragmented resources, complex college systems and resource-constrained staff. Early evidence indicates that the COVID-19 pandemic has widened these barriers, putting the diversity of our future workforce and equitable economic mobility at continued risk.

<sup>1</sup> Pew Research Center analysis of 1996 and 2016 National Postsecondary Student Aid Study (NPSAAS), National Center for Education Statistics, "A Rising Share of Undergraduates Are From Poor Families, Especially at Less Selective Colleges."

<sup>2</sup> Pell Institute, "Indicators of Higher Education Equity in the United States: 2022 Historical Trend Report," page 292.

### THE COLLEGE DEGREE DIVIDE

While the number of college students in poverty or who are nonwhite has increased throughout higher education,<sup>1</sup> too many of them are being left behind as they graduate college at rates far lower than their higher-income peers.<sup>2</sup>



THOSE WITH  
A COLLEGE  
DEGREE ARE:



**3.5x** less likely  
to live in poverty<sup>3</sup>



**24%** more likely  
to be employed<sup>4</sup>



And earn upward of  
**\$1.2M more**  
in their lifetime<sup>5</sup>

## Strong communities are fueled by college equity

When students from under-represented communities earn a bachelor's degree, especially those who are the first in their family to attend college, they are 24% more likely to be employed and 3.5 times less likely to live in poverty when compared with peers who don't attend college.<sup>3</sup> Evidence shows that college graduates earn upward of \$1.2 million more in their lifetime, and have higher rates of civic engagement than their high school graduate peers.<sup>5</sup>

Evidence also shows that removing barriers to college access and success can create a more diverse and richer educational experience on college campuses. Removing these barriers also contributes to building a more diverse workforce, a critical factor in fueling greater innovation, stronger communities, and more equitable economic mobility.

<sup>3</sup> "It's Not Just the Money: The Benefits of College Education to Individuals and to Society," 2015. <https://www.luminafoundation.org/resource/its-not-just-the-money/>

<sup>4</sup> U.S. Bureau of Labor Statistics, 2019. <https://www.bls.gov/opub/ted/2019/44-6-percent-of-high-school-dropouts-and-72-3-percent-of-college-graduates-employed-in-august-2019.htm>

<sup>5</sup> Lumina Foundation, "Stronger Nation Report," 2015. <https://www.luminafoundation.org/news-and-views/stronger-nation-2015/>

"If there is one lesson I've learned from College Possible it's this: trust your purpose and lived experience. I can say with utmost certainty that College Possible changed the trajectory of my life for the better."

Laura,  
Reynolds High School,  
Princeton University  
(Pictured)







## We empower the college dream

At College Possible Oregon, we're working to close the college degree divide. Since 2012, our college access and success programs have helped put more than 2,690<sup>6</sup> students throughout Oregon on the path to a college degree. The majority of students we serve are first-generation college students<sup>7</sup> while 68% identify as persons of color.<sup>8</sup> Our pioneering model matches eligible students with near-peer coaches and an intensive curriculum designed to help them overcome the most common barriers to getting into college and completing their degree — all at no cost to students or their families.

Through our partnerships with area high schools and college institutions, we are advancing college equity for the greater Oregon community.

<sup>6</sup> Fiscal year 2022.

<sup>7</sup> Fiscal year 2022; students with parents or guardians who did not graduate from a bachelor degree granting institution.

<sup>8</sup> Of students served fiscal year 2022 who reported race/ethnicity; this represents those who identified as Black/African/African-American, Hispanic/Latinx, Asian/Pacific Islander, American Indian/Native Alaskan or Multiracial.

### WHAT SETS US APART:



#### Near-Peer Coaches

Students benefit from the relatability, recent experience and trusted relationship of their near-peer coaches who offer an evidence-based curriculum of personalized interventions.



#### 6+ Years of Support

Students enrolled in our Flagship program receive one of the longest support cycles available, starting their junior year in high school and continuing through degree completion.



#### Support for Unenrolled Students

Students who unenroll or stop out of college continue to receive coaching support to help them get back on track toward their college degree goal.



#### Free to Students

Thanks to the generous support of our funders and partners, our college access and success programs are offered at no cost to students or their families.



**AmeriCorps**

### A PROUD AMERICORPS PROGRAM

AmeriCorps is a federal agency that brings people together to tackle the country's most pressing challenges through national service. Our AmeriCorps members commit to a year of service as College Possible coaches in communities throughout the country. Many represent the identities of the students they serve, and each brings a commitment to social justice and closing the college equity divide.

# College access and success programs offered in Oregon



## Flagship

Our primary, site-based college access and success program. Eligible students receive at least six years of near-peer coaching support to recognize and overcome the most common barriers to getting into and through college.



## Navigate

A tech-connected, hybrid version of our Flagship program. Partner high schools located in rural communities and/or outside the urban center of Portland, OR are matched with trained near-peer coaches to support eligible students to get into college.



## Connects College Partnerships

Customized college partnerships to match, recruit, and support the college persistence and degree completion of College Possible students on partner campuses.

“The education systems are complex and confusing. For me, it was incredibly valuable to have College Possible alongside to help navigate it all.”

Gabby,  
Gresham High School,  
Portland State University  
(Pictured)



## Over 20 years of national, evidence-based results

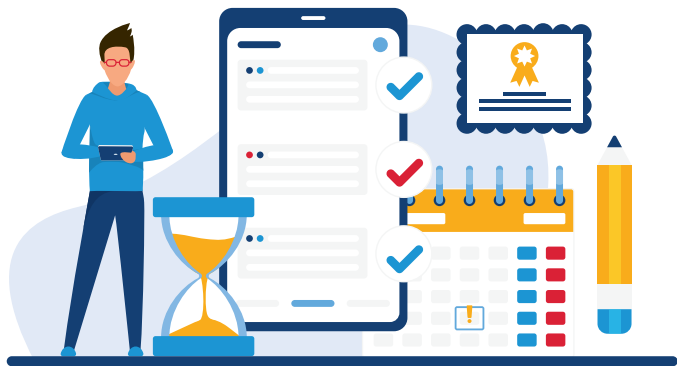
As one of the largest college access and success organizations in the country, our evidence-based programs have earned national credibility. Compared with their peers from similar backgrounds, College Possible students are **30% more likely** to enroll in college the year after high school graduation, and **three times more likely** to earn a bachelor's degree after graduating from high school.<sup>9</sup>

**30%**

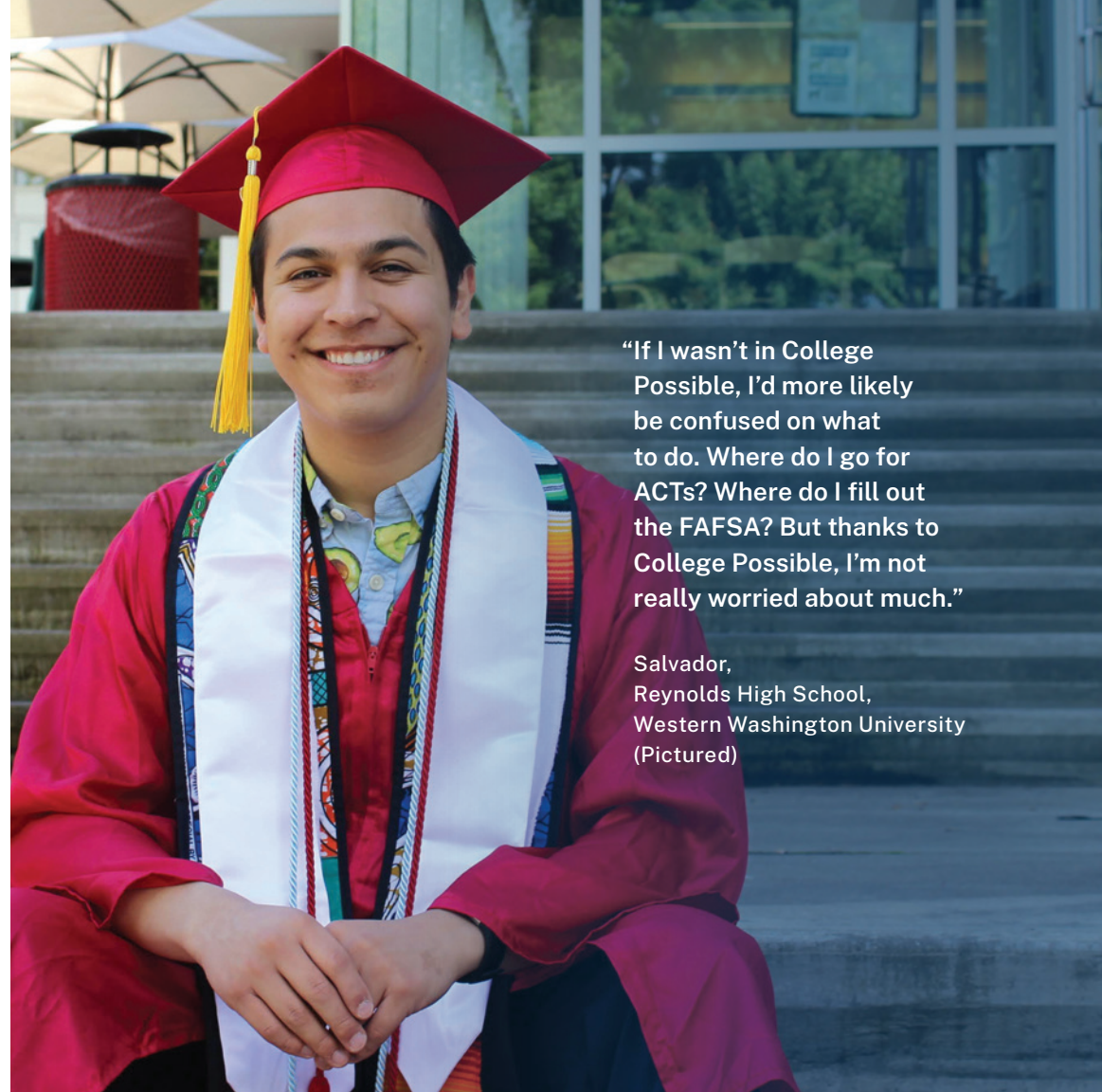
more likely to enroll in college the year after high school graduation<sup>9</sup>

**3x**

more likely to earn a bachelor's degree after graduating high school<sup>9</sup>



<sup>9</sup> The Pell Institute for the Study of Opportunity in Higher Education. Indicators of Higher Education Equity in the United States. p 121. 2019. [http://pellinstitute.org/indicators/reports\\_2019.shtml](http://pellinstitute.org/indicators/reports_2019.shtml).



“If I wasn’t in College Possible, I’d more likely be confused on what to do. Where do I go for ACTs? Where do I fill out the FAFSA? But thanks to College Possible, I’m not really worried about much.”

Salvador,  
Reynolds High School,  
Western Washington University  
(Pictured)



# THE COLLEGE POSSIBLE STUDENT JOURNEY

## 1 Explore and prepare HIGH SCHOOL JUNIOR YEAR

- ACT prep
- College fit exploration
- College visits and selection
- Paying for college

## 2 Select, apply and finance HIGH SCHOOL SENIOR YEAR

- Financial aid and scholarship applications
- College application and essay prep
- College visits and selection
- Plan for housing and transportation

## 3 Transition to college SUMMER BRIDGE

- Class enrollment
- Transition to college

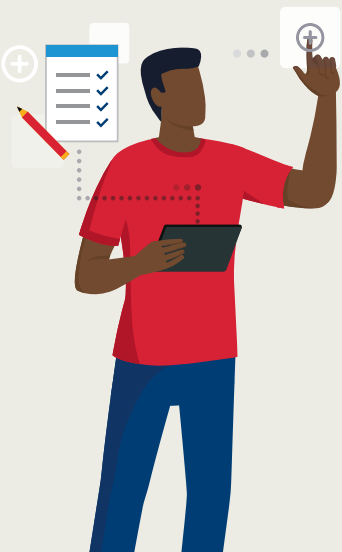
## 4 Persist through graduation COLLEGE YEARS


- Navigate complex college systems
- Access campus and community resources
- Form supportive peer and campus relationships
- Adjust to the rigors of the first year
- Stay on track academically
- Renew financial aid and scholarships
- Budget and manage time

## 5 Transition to career GRADUATION

- Secure internships and jobs
- Resume and interview prep

Near-peer coaches provide proactive, personalized support to help students **navigate and break through the most common barriers** on their path to a college degree





“My College Possible coach helped me figure out which college would be a good fit for me and would be financially feasible. They made it easy to visualize the financial aid packages for each school I was accepted to with a spreadsheet that included the various — and often underlying — costs of attending college.”

Lisbeth,  
David Douglas High School,  
Franklin & Marshall College  
(Pictured)

## Learn more or get involved

### PARTNER WITH US

To explore how a College Possible Oregon partnership can empower your high school or college students, contact our College Access and Success team at [OregonInfo@CollegePossible.org](mailto:OregonInfo@CollegePossible.org) to schedule an informational meeting.

### MAKE A DONATION

Your financial support helps us continue to expand our coaching and support throughout Oregon at no cost to enrolled students or their families. To make a donation, visit [CollegePossible.org/DonateOregon](https://CollegePossible.org/DonateOregon). If you are a business looking to partner with College Possible Oregon, contact our Corporate and Community Engagement team at [OregonInfo@CollegePossible.org](mailto:OregonInfo@CollegePossible.org).

### AMERICORPS: SERVE WITH US

If you know a current college student or recent grad interested in making a meaningful difference in the lives of youth, encourage them to explore a life-changing year of service as a College Possible Oregon AmeriCorps coach at [CollegePossible.org/Serve](https://CollegePossible.org/Serve).

### STUDENTS: GET COLLEGE COACHING

If you know an eligible student who dreams of attending college and would like free support to find their best-fit colleges, build strong college applications, finance their education, and persist through graduation, refer them to [CollegePossible.org/Apply](https://CollegePossible.org/Apply).





College Possible is proudly supported by AmeriCorps

This material is based upon work supported by AmeriCorps grants. Opinions or points of view expressed in this document are those of the authors and do not necessarily reflect the official position of, or a position that is endorsed by, AmeriCorps.

### **College Possible Oregon**

532 SE Grand Avenue  
Portland, Oregon 97214  
Phone: 971-407-2960

### **FOLLOW US**



@CollegePossibleOregon



@CollPossibleOR *(formerly Twitter)*



/showcase/College-Possible-Oregon/



/CollegePossibleOregon

**CollegePossible.org/Oregon**