



# Persist

## Fiscal Year 2021 Annual Report

Dear Friends,

Everything we do at College Possible is aimed at eliminating barriers on a student's path to complete a college degree and the economic mobility it has been proven to afford. To the more than 22,000 students we served during the 2020–2021 school year, the COVID-19 pandemic presented a remarkable set of challenges that made that path tougher than ever, particularly for students of color, first-generation students and students from low-income backgrounds. For these reasons, our commitment to our mission and our gratitude to our supporters and funders has never been stronger.

More than anything, the persistence of College Possible students, coaches and staff have given us much to celebrate. While national college persistence rates dropped to a historic lows last year, students enrolled in College Possible programs continued to persist, defying these national trends. As we reflect on our key learnings, four themes have surfaced that exemplify our students' ability to persist on their college path, described in broader detail throughout this annual report:

**CONTINUITY:** Meaningful peer relationships provided continuity of support.

**ENGAGEMENT:** Creativity and adaptability met students where they were.

**COMMUNITY:** Virtual experiences built much-needed community.

**PARTNERSHIP:** Shared partner commitments enhanced student support.

On behalf of our entire team, I want to thank you for your continued support and commitment to our mission. Your partnership plays a vital role in supporting each and every student we're privileged to serve.

Sincerely,



Craig Robinson  
Chief Executive Officer

## Leadership and National Board of Directors

**Craig Robinson**  
Chief Executive Officer

### FISCAL YEAR 2021 BOARD OF DIRECTORS

**Stephen M. Smith, Chair**  
Partner, Intellispark

**Joanna Burleson, Vice Chair**  
Managing Director, The Monitor Institute,  
Deloitte Consulting, LLP

**Al Fan, Treasurer**  
Board Member

**Dr. Donnell Butler**  
Managing Director of College Initiatives,  
Together Education

**Dr. Lorelle Espinosa**  
Director of Programs for Diversity,  
Equity & Inclusion in STEM, Alfred P. Sloan  
Foundation

**Marlene M. Ibsen**  
CEO and President, Travelers Foundation,  
VP, Community Relations, The Travelers  
Companies, Inc.

**Jeff Kutash**  
Co-founder, Boldly Go Philanthropy

**Daniel Lugo, J.D.**  
President, Queens University of Charlotte

**Andrea Mokros**  
Chief Public Affairs Officer,  
Fairview Health Services

**Joelle Murchison**  
Principal and Founder,  
ExecMommyGroup LLC

**Deanna Singh**  
Chief Change Agent and Founder,  
Flying Elephant

# Regional Site Advisory Boards

## CHICAGO

### BOARD OF DIRECTORS

**Beth Satterfield, Chair**

Managing Director – Head of Market Development, William Blair

**Philip Alphonse**

Co-Founder, Partner, The Vistria Group

**Martha Boudos**

Retired, Morningstar

**Bruce Cohen**

Senior Advisor, Sterling Bay

**Chanel Coney**

Director, Chicago Fundamental Investment Partners, LLC

**Ryan Flury**

Executive Director and Team Lead, J.P. Morgan Private Bank

**Craig Huffman**

Co-Founder and Managing Partner, Metro Edge Technologies

**Mohit Kalra**

General Counsel and Chief Privacy Officer, Numerator

**Kristin Kranias**

Independent Consultant

**Carol Levy**

Levy Family Partners

**Chris Moree**

Chief of Staff, Apollo Global Management

**Adnan Nisar**

Partner, The Vistria Group

**Ramkumar Ramanan**

Partner, Assurance Services, Ernst & Young LLP

**Carol Rubin**

Chief Operating Officer, Jenner & Block

### AUXILIARY BOARD

**Meredith Greenberg**

Consultant, Bain & Company

**Tom Hamilton**

Director of Special Projects, Relativity

**Jono Keedy**

Account Executive, Stripe

**Johnnie Lovett**

Director of Strategy and Integration, TEN35

**Sarah McGraw Reichert**

Principal, BanyanGlobal

**Blerta Mileti**

Associate Attorney, Hinshaw & Culbertson, LLP

**Courtney Owens**

Equity Research Associate, William Blair

**Madeline Spellman**

Senior Associate, Weber Shandwick

**Jane Sytsma, CPA**

Director, PwC

**Kyle Welch**

Chicago Scoops, LLC and Epic Burger

**Elliot Wheeler**

Chief Investment Officer, Cooper Management LLC

## MILWAUKEE

### BOARD OF DIRECTORS

**Dick Seesel, Chair**

Owner, Retailing In Focus

**Mayra Alaniz**

Grant Monitor, City Of Milwaukee

**Grady Crosby III**

Attorney, Ogletree Deakins

**Rick Dillon**

Ceo/Evp, Enerpac

**David Gay**

Managing Partner, EY

**Christine Holloway**

Vice President Healthcare Sales, CDW

**Louis Johnson**

Investigations/Special Projects, Gruber Law Offices, LLC

**Sangeeta Khanna**

Community Volunteer

**Dr. Keith Posley**

Superintendent of Schools, Milwaukee Public Schools

**Josh Smith**

Research and Development Manager, AO Smith Corp

**Lindy Yeager**

Community Volunteer

## MINNESOTA

### BOARD OF DIRECTORS

**Nathan Shore, Chair**

Senior Director of Brand Strategy, Media and Creative, HealthPartners

**Julio Vargas-Essex, Vice-Chair**

Vice President of Student Success, North Hennepin Community College

**Alex Bakkum**

Senior Vice President and Director of The Center for Family Philanthropy, U.S. Bank College Possible Corps Alumnus

**Stephen Friend**

Vice President, Corporate Mergers and Acquisitions, Thrivent Financial

**Elle Grothaus**

Global Talent Leader and Global Human Resources Business Partner – Commercial Excellence, Cargill, Inc.

**Bruce Henderson II**

Human Resources Director, Medtronic

**Natalia Hernandez**

Head of School, Breck School

**Jasmine Jirele**

Chief Growth Officer, Allianz Life Insurance Company of North America

**Douachee Lee**

Marketing Manager, Epilepsy Foundation of Minnesota  
College Possible Program Alumna

**Dee Olateru**

Senior Manager, Financial Services Banking and Capital Markets, Ernst & Young

**Rhonda O'Neill**

Community Volunteer

**Rinal Ray**

Chief Executive Officer, People Serving People  
College Possible Corps Alumna

**Scott Savoy**

Vice President – Credit Management, Synchrony Financial

**Chris Staley**

Co-Founder and Executive Vice President, Horizontal Digital

**Zer Vang**

Director of Student Recruitment, University of St. Thomas, Morrison Family College of Health, College Possible Program Alumna

## OMAHA

### BOARD OF DIRECTORS

**Lisa Lackovic, Chair**

Architectural Representative, Endicott Clay Products

**Dr. Jack Becker**

Executive Director and CEO, Joslyn Art Museum

**Ryan Ellis**

CEO, PJ Morgan Real Estate

**Jianqiang Hao**

VP for Decision Sciences and Reporting, First National Bank of Omaha

**Emiliano Lerda, J.D.**

Vice President, Paul G Smith Associates

**Emily Lischer**

Community Volunteer

**Jeff McGinn**

SVP, Strategic Development, United Way of the Quad Cities

## Regional Site Advisory Boards, continued

### Dr. Andrew Rikli

Superintendent, Papillion La Vista Community Schools

### Tyler Schlumpf

Vice President and Senior Investment Strategist, Wells Fargo Bank

### Gretchen Twohig

Chief Compliance Officer and General Counsel, Blue Cross and Blue Shield of Nebraska

## OREGON

### BOARD OF DIRECTORS

#### Ken Thrasher, Chair

Retired CEO of Fred Meyer and Compli

#### George Granger

President, AT&T Oregon

#### Clark Haass

Senior Business Development Manager, Data Center Group, Intel

#### Anne Hoot

Vice President, The Standard

#### Sona Karentz Andrews

Professor of Geography and Provost Emerita, Portland State University

#### Sung Lim

AVP Portfolio Manager, US Bank

#### Sarah Mathenia

Attorney, Alterman Law Group PC

#### Tom Nilan

Manager, Environmental Compliance and Licensing, Portland General Electric

#### Agata Ramallo-Garcia

GM, Nike, Inc. Global Sustainability Center of Excellence

#### Charese Rohny

Attorney, Charese Rohny Law Office, LLC

#### Natasha Shauger

Program Manager, Xerox

#### Amy Trieu

Advocacy and Partnership Associate, Children's Institute

## PHILADELPHIA

### BOARD OF DIRECTORS

#### M. Anthony Barrett, Chair

Managing Director, Raymond James & Associates, Inc.

#### Cassandra Bell

Assistant Vice President, Senior Branch Manager at M&T Bank

#### Jeff Berstein

Vice Chairman, ImageFIRST

#### Eric Bryant

Global Technology Associate, Advanced Polymers and Performance Monomers Technology Center, Dow Inc.

#### Susan Buehler

Chief Communications Officer, PJM Interconnection

#### Joseph Divis

Interim President, AT&T New Jersey

#### Joel Feldman

Managing Director, Boenning & Scattergood

#### Dr. H. Judy Lee

Penn Wood High School Principal, William Penn School District

#### Sylvia Rivera

Product Specialist, Project Management Institute

#### Dave Schrader

Public Relations Manager (East Retail Division), NRG Energy

#### Romit Shahani

Principal (Partner), ZS Associates

#### Sameer S. Somal

Chief Financial Officer, Blue Ocean Global Technology & Blue Ocean Global Wealth

#### Brian Walsh, Jr.

Financial Advisor, Walsh & Nicholson Financial Group

## WASHINGTON

### BOARD OF DIRECTORS

#### Norm Bontje, Chair

Member, Fortuna Investments

#### Bonnie Berk

Founder, BERK Consulting

#### Kendall Guthrie

Strategy Consultant and Leadership Coach

#### Austin Dahl

Retired, former Director of Engineering, Tableau Software

#### Manmeet K. Dhani

Corporate Attorney, Associate at Fenwick & West

#### Gloria Dixon

Director Philanthropy, BECU Foundation

#### Linda Hendrickson

Co-owner, Hendrickson Coaching & Consulting

#### Betsy Herring

Member, Washington Women's Foundation

#### Judy Margrath

President/CEO at GMA Consulting

#### Chuck Nordhoff

Trustee, Wellspring Family Services

“The toll of this (COVID-19) pandemic is, in a word, devastating. It’s eroding students’ academic success, their emotional well-being, and their personal finances.”

John King, Jr., president and CEO of the Education Trust and a former U.S. Secretary of Education



# persist

[ per-sist, -zist ]

*verb*

to continue steadfastly or firmly in some state, purpose or course of action, especially in spite of opposition

Nationally, the COVID-19 pandemic has measurably widened the college equity gap — the systemic disparities and barriers that disproportionately affect students from low-income backgrounds, persons of color, and first-generation students in their ability to get into and through college. In fact, according to the National Student Clearinghouse Research Center (NSCRC), the rate of college student persistence dropped two percentage points last year, the largest one-year drop since 2009, when the [NSCRC](#) began reporting this metric.

By contrast, students enrolled in College Possible programs last year persisted at rates that defied these national norms. Several factors contributed to these important results, including those inherent in the College Possible coaching model, the resilience of our coaches and staff, and the unwavering support of our partners and funders. In the narrative that follows, we highlight four standout themes that empowered the persistence of College Possible students in fiscal year 2021 amid a set of truly remarkable circumstances.

## Continuity: Meaningful peer relationships provided continuity of support

Near-peer coaches are at the center of the College Possible model. The proximity in age and relatable experience of coaches translate into a trusted relationship and a reliable partner throughout a student’s college experience. Last year, these relationships provided critical continuity of support for students within an environment of extreme uncertainty.

Further, high school and institutional partners found significant value in having College Possible in their corner to help ensure this segment of their student body wouldn’t be left behind. While the pandemic demanded that schools — and College Possible — pivot quickly to an all-virtual environment, it’s clear that remote technology was not enough to support college persistence; rather relationships played a central role. Unfortunately, access to guidance counselors and institutional staff declined as schools moved from open office hours to appointment-driven systems and virtual support models.

This setback was compounded by closures of after-school programs and other networks of relationships that students count on to support their college journey. Throughout last year, College Possible coaches provided continuous access to a reliable, trusted relationship that students could turn to as they navigated through a remarkable set of challenges.



## **Engagement:** Creativity and adaptability met students where they were

Throughout a given school year, College Possible coaches provide a rigorous curriculum of engagement that aligns to the student's college journey, delivered via small group and one-on-one interactions as well as through virtual technology, texts and email. COVID-19 forced a national pivot of our model to a fully virtual coaching environment, adapting key learnings from our existing tech-connected programs and creative adaptations to consistently engage students who were limited by other barriers.

Staff and coaches went into overdrive to help ensure that no student fell through the cracks. For some students, technology offered security, enabling them to connect from the safety of home. For others, it offered flexibility as they juggled jobs and/or unpredictable schedules.

**“Our staff and coaches exhibited the resilience we want to model for our students,”** said Precious Mines, senior program director for College Possible's Philadelphia site.

## **Community:** Virtual experiences built much-needed community

Last year's closures resulted in a profound social isolation for students. For students just entering college, particularly those who are the first in their families to attend, the transition can already be tough as they struggle to find a sense of belonging and community on campus.

Coaches demonstrated significant creativity in using technology as a social space, helping build and sustain a sense of community among students. Recognizing that all students were struggling with Zoom fatigue, we created new norms for inclusion and employed interactive features that made it easier for students to stay engaged within a low-pressure environment. Coaches designed social events to build relationships and community among students, recognizing that building this sense of community was an important element in their students' ability to persist.

## **Partnership:** Shared partner commitments enhanced student support

More than anything, the COVID-19 pandemic reinforced the importance of partnership and teamwork to support student persistence. Throughout the country, our national and regional funders and partners stepped up in remarkable ways to expand their support and empower student persistence on their college journey. Thanks to this generosity, we were able to offer nearly \$300,000 in emergency student aid funding, extend mental health support services to many of our students, and in some areas even expand the number of students served.

Other regional partners stepped up with creative solutions such as waiving student fees, offering college textbook scholarships and extending critical resources that broke down real barriers to student persistence.

**“For many students, COVID-19 has raised new barriers to getting a degree and made old barriers that much harder to overcome. Early evidence also shows disparities in these impacts for students who faced the greatest hurdles to entering and staying in school before the pandemic, especially those students from historically underserved, marginalized groups.”**

Department of Education Office for Civil Rights, “Education in a Pandemic: The Disparate Impacts of COVID-19 on America's Students”



### STUDENT SPOTLIGHT

## Kevin Cortez, High School Junior from Omaha, Nebraska

Kevin Cortez, now a high school senior in Omaha, Nebraska, wants to design and build houses, a career track he's had in mind for years. He started working with a College Possible coach last fall as he began his junior year, a pivotal time on the college path when students prep for the SAT or ACT and begin their college search. It was also a time when he made the move to an online school environment.

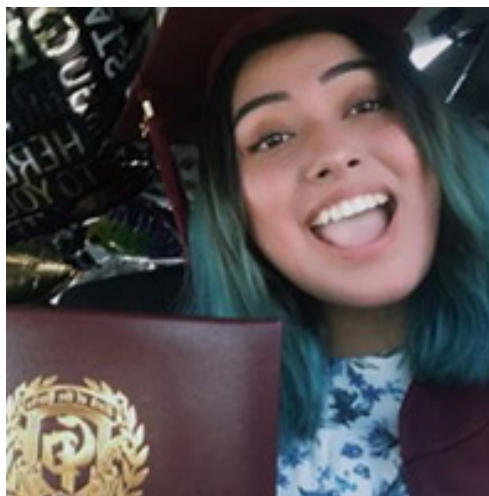
"When you're in school in person," said Kevin, "it's a lot easier to know what's happening," due to better lines of communication, access to teachers and staff, and the ability to learn from what others are doing. By comparison, Kevin found the online environment disruptive and disengaging. "Wi-Fi access was challenging. Sometimes I'd get disconnected from a class because the Wi-Fi was spotty; it was also pretty disruptive," said Kevin.

Retaining a sense of community was tough, too. Before his junior year, Kevin had been involved in soccer and band — activities that he really enjoyed. While these activities continued to some degree, he found it hard to communicate and ended up opting out.

Amid these disruptions, preparing for the ACT and beginning his college search seemed daunting. At the time, Kevin's school was able to offer test prep in person and on the school's tech platform, but it was self-driven. "My College Possible coach helped me connect the dots. They helped me understand the test prep process — where my strengths were and what I could work on to use my time well."

Next up was identifying a list of best-fit colleges he would apply to during his senior year. "My coach made it really simple by helping me consider certain fit factors, like the school's teacher-to-student ratio, how big the classrooms were, what the campus was like, or their offerings around different majors," said Kevin. His coach helped him discover that his top considerations came down to the majors offered, opportunities to play sports, and the rigor of the academics. "I didn't mind going to in-state colleges, which helped me narrow down my list."

Throughout last year, Kevin said it was his family that played the most influential role in his commitment to persist on his college path: "They hold me up to a standard I have to achieve and want to meet." Not to mention a strong set of values that Kevin lives by. For Kevin, college means much more than a pathway to a career. "I want to take care of my parents, give back to my community and make a change," he said. "This is really important to me."



### STUDENT SPOTLIGHT

## Camila Moralez, High School Senior from Chicago, Illinois

For Camila Moralez, the toughest part about starting her senior year in a pandemic was the social isolation and disconnection from her school community. “I’d picked higher level classes because everyone there really wanted to be there. Before Covid, the discussions were eye opening, everyone was engaged,” said Camila. Despite teachers’ best efforts, class via Zoom just wasn’t the same. “It was tough, a lot of students stayed off camera.”

According to Camila, thinking about college was even harder. “The school counselors are there for everyone but it was tough for them to check up on every student. It was harder to get the one-on-one meeting time I needed to explore my college options or figure out how to pay for college.” What kept her going was thinking about her future. She’s always loved nature and her dream of a career involving animals drove her. She set her sights on getting into her dream school, Ohio Wesleyan University, because of its great zoology program, small class sizes, and reputation for a lot of student attention. “I knew to get there I had to keep my grades up. I focused on the small goals right in front of me, rather than get overwhelmed.”

Senior year typically means college applications, financial aid forms, and applying for scholarships, but for Camila it also meant taking her SATs which had been postponed from the previous spring because of COVID closures. “My College Possible coach even gave me her phone number; she was there every time

I needed her,” including helping Camila find a dozen or more scholarships she could apply to and providing structured workbooks and study methods to prepare and practice for the SAT. “She kept lifting me back up,” said Camila.

Camila’s hard work paid off. She got into her dream school and is now attending as a freshman. Her coach really helped her find this best-fit school. “The financial support was a really important factor for me and my family,” said Camila, who is the youngest of three with a sister already in college. “Thankfully I was able to get a good financial aid package and scholarships,” due in large part to her coach’s support. Camila also was awarded entry into the school’s Global Scholars Program, which included a rigorous and competitive application process. This fully funded international studies program will help her connect to other cultures and ideas. “I’m so excited about what’s ahead and how I can connect what I learn back to my community.”



### COACH SPOTLIGHT

## Rachel Riojas, Catalyze Coach at California State University Stanislaus

For Rachel Riojas, a college coach serving students at her alma mater, California State University Stanislaus, the pandemic's impact last year was as varied as the students she served. Most of her cohort are first-generation college students, and last year's top challenges often aligned to where they were on their college journey.

"Incoming freshmen mostly struggled with the transition to the virtual environment, figuring out their class schedules, even using email," said Rachel. Accessing campus resources and helping students get time with staff was a big challenge because of closures: "There wasn't anyone in the offices to ask."

Students who were graduating were anxious about entering the workforce. "Many of their families were struggling financially because of the pandemic. That put added pressure on them to get a job right away." Across the board, students were missing the social aspect of college; they struggled with isolation, and staying engaged in virtual classrooms. "Last year's college experience definitely wasn't what they expected," she said.

Like other Catalyze coaches on campus, Rachel's relatability as a non-traditional student played a powerful role in her ability to support students through a tough year. She focused on creating a sense of belonging for her students. "The other coaches and I created virtual events to keep students engaged, using games and activities to help them navigate things we knew they found confusing." They led a Jeopardy-like workshop to boost student confidence around financial aid and FAFSA applications, and led a vision board activity to talk about the students' goals for the academic year.

"Our work is all about taking down barriers, big and small," said Rachel. For instance, she and her fellow coaches understood how confusing it could be to

navigate the school website, leaving a lot of campus resources unused in a time when need may have been highest. The coaches created an e-newsletter that summarized the campus programs students needed most, giving them one place to go.

Sometimes taking down barriers involves helping students ask for what they need. Rachel's near-peer relatability often helps students be more vulnerable with her than they might be with faculty or staff. "I had a senior who was getting ready to graduate last year, but had fallen a bit behind because of a personal barrier she was facing," said Rachel. "I asked if she'd talked to her professor to explore her options," but her student resisted at first. "For her, asking for help in that way felt like she wasn't taking responsibility or that she was asking for special treatment." Rachel helped her student realize that asking for help can also be empowering. In fact, the student's professor was happy to offer an extension.

Rachel's journey to becoming a coach started with her own struggles in school. "I was a teen mom and a college dropout who returned later to finish my degree. I struggled, but I also met a lot of great mentors here. I wanted to be that same support person I needed back then to someone else."

Rachel is now earning her Masters in Social Work at CSU Stanislaus. Once her service year with College Possible is finished, she plans to continue with AmeriCorps and education service. "I'm excited to see where this next year might take me," she said.





College Possible’s near-peer coaching provides a proven, uniquely personalized, and effective way to keep students from low-income backgrounds on the path to college completion.

# Impact

## NATIONAL REACH

At the close of our 2021 school year, College Possible’s reach included:



**7** Regional Sites

Chicago, Milwaukee, Minnesota, Omaha, Oregon, Philadelphia and Washington

**63,512**

Students Served Since 2000



**19,249**

Students Served Annually



**82**

High School Partners

**534**

College Partners

**1,276**

Total Colleges Attended\*

\*To any degree granting institution, inclusive of students enrolled in our core program and Catalyze program.

At the close of the 2020–2021 school year, College Possible students achieved the following college access, retention and success results:



**99%**

Applied\*



**91%**

Accepted\*



**84%**

Enrolled\*

\*To any degree-granting institution, for Fall 2021.

**86%**

First-to-Second  
Year Persistence\*



**75%**

Annual  
Persistence\*

\*At a four-year, bachelor's degree granting institution during the 2020-2021 school year.



**1,008**

Graduated with a  
Bachelor's Degree

## Income Statement

### Unrestricted Revenue & Support

**\$28,531,553**

vs. FY '20 — \$25,402,165

### Expenses

**\$24,171,437**

vs. FY '20 — \$25,139,162

## Balance Sheet

### Assets

Current Assets \$8,015,587

Property & Equipment \$904,977

Other Assets \$14,515,888

**Total \$23,436,452**

### Liabilities & Net Assets

Current Liabilities\* \$4,523,289

Long-Term Liabilities\* \$267,181

Net Assets \$18,645,982

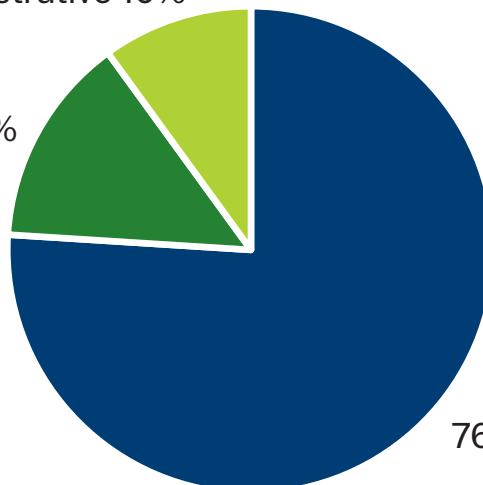
**Total \$23,436,452**

*\*Roughly \$3 million in current liabilities is deferred revenue from conditional grants we expect to recognize within the next fiscal year.*

## Functional Expenses

General & Administrative 10%

Fundraising 14%



76% Program Services



**COLLEGE  
POSSIBLE™**

# National Donors and Partners Fiscal Year 2021

Twelve months ended June 30, 2021

## NATIONAL MULTI-YEAR LEADERSHIP GIFTS

### Ballmer Group

\$20 million over 10 years

### Blue Meridian Partners

\$7 million over 2 years

### The Travelers Companies, Inc.

\$900,000 over 3 years

### Education Credit Management Corporation

\$700,000 over 4 years

## CORPORATE, FOUNDATION AND GOVERNMENT FUNDERS

AmazonSmile Foundation  
AmeriCorps National Direct Apple  
The David R. & Patricia D. Atkinson Foundation  
Ballmer Group  
Blue Meridian Partners  
California Volunteers  
Carnegie Corporation of New York  
Michael & Susan Dell Foundation  
Education Credit Management Corporation  
The Elmwood Foundation  
Kehillat Israel Tzedakah Teens  
National College Attainment Network  
New York Life Insurance Company  
Northwest Area Foundation  
Reinvent Stockton Foundation  
Robert E. Gallagher Charitable Trust  
SalesForce.com Foundation  
Taco Bell Foundation  
The Travelers Companies, Inc.  
United States Department of Education  
Volunteer Iowa  
Westly Foundation

## INDIVIDUAL AND FAMILY FOUNDATIONS

Anonymous (12)  
Millie Acamovic and Chris Wilson  
Donald Adams  
Lilia Alvarado  
Nancy Anderson  
Edward Bassin  
Ingrid Becher  
Jean and David Benson  
Josh Bishop  
Ronald Bloom  
Brigit Boler  
Anne Brindle  
Michelle Browning  
David Buck  
Malia Burley  
Dr. Donnell J. Butler\*  
Carpe Diem Family Fund  
Richard Cloutier and Margaret Kruse  
Nils Dahl  
Charlotte Danard  
Charlotte Daniels  
Neil and Ann Decker  
Andrew Deye  
Lara Dreier  
Lorelle Espinosa\*  
David Fairman and Juliette Zener  
Roger and Cheryl Fieri  
Carol Flanagan  
Ryan Gherman  
Laura and Robert Gillund  
Deborah Glotzer and David Waltz  
Eugene Gorrin  
Tom Hendrickson  
Mara Hennen  
Steven R. Hibshman  
Patricia Hilsinger  
Ed Hlavka and Libby Driscoll Hlavka  
Robin Holland  
Michael Hood and Luisa Palacios  
Marlene\* and Jim Ibsen  
Michelle Jacobs  
Elijah Johnsen  
Sara Joyner  
Michele Kadell

David Kozhuk  
Abby Kushner  
Emily and Jay LaFave  
Alli LeMay  
Michele and Frank Lombardo  
Shantina Manning  
Caitlin Masters  
Christy McCoy  
Grace and Frederick Mohrien  
Andrea Mokros\*  
Brent Moore  
Mandy Motl  
Sam Mott  
Joelle Murchison\*  
Lisa Orlando  
Eric Peterson  
Dr. Dia Pflieger  
Eric Porter  
Thomas Ranese  
Richard Reed  
Sandy Reese  
Craig Robinson  
Carlye and Kamas Rooney  
Emma Sager  
Beth Sayman  
The Marcee Harris Schwartz and Jon Schwartz Philanthropic  
Fund of the Jewish Community  
Foundation of the Minneapolis Jewish Federation  
Franki Senter  
Denise Smit  
Stephen Smith\*  
Kathi Stark  
Susan Thornton  
Robert and Pamela Tichy  
Sofia Totapudi  
Andrew and Linnea Turner  
United Way of Greater Atlanta  
Thomas Walker  
Amy and Alex Ware  
Will Wiseman  
Angela Wong  
Nigel Woolf  
Jane Yeh  
Federico Younes

## MULTI-SITE FUNDERS

Alaska Airlines Foundation  
Ascendium Education Group  
Ballmer Group  
Old National Bank  
Silver Family Foundation  
Synchrony  
U.S. Bank Foundation  
UBS Community Affairs  
Umpqua Bank Charitable Foundation

## GIFTS IN TRIBUTE

In honor of Donnell Butler  
In honor of Federico Lombardo  
In honor of Jim McCorkell  
In honor of Chris Mitchell  
In honor of Robert Massa  
In honor of Taylor Parsons  
In memory of Gerald Entman

## MATCHING GIFT COMPANIES

Apple  
The Travelers Companies, Inc.

## SCHOOL AND COMMUNITY PARTNERS

Austin Peay State University  
California State University, Stanislaus  
Coe College  
Luther College  
Morgan State University  
Northland College  
St. Cloud State University  
University of Cincinnati  
Vaughn College of Aeronautics and Technology

# Thank you!

**KEY:** \*National or Local Board Member °Current Student or Program Alumni





**COLLEGE  
POSSIBLE™**

# Chicago Donors and Partners Fiscal Year 2021

Twelve months ended June 30, 2021

## MULTI-YEAR LEADERSHIP GIFTS

**Caerus Foundation**  
\$100,000 over 2 years

**Crown Family Philanthropies**  
\$100,000 over 2 years

**Polk Bros. Foundation**  
\$80,000 over 2 years

**CME Group Foundation**  
\$50,000 over 2 years

**The Siragusa Family Foundation**  
\$30,000 over 3 years

## CORPORATE, FOUNDATION AND GOVERNMENT FUNDERS

Anonymous  
A Better Chicago  
A Better Chicago Fund, a McCormick Foundation Fund  
The Bank of America Charitable Foundation, Inc.  
Banner Witcoff  
Birch Lake Holdings, LP  
BMO Harris Bank  
Caerus Foundation, Inc.  
CME Group Foundation  
Chicago White Sox Community Fund  
Crown Family Philanthropies  
The Donley Foundation  
DRW Trading Group Foundation  
Ernst & Young U.S. LLP  
Finnegan Family Foundation  
Foundation To Be Named Later  
Hyatt Hotels Corporation  
Illinois Tool Works  
Jones Lang LaSalle  
The Joseph Pedott Charitable Fund at The Chicago Community Foundation  
Kirkland and Ellis Foundation  
The Mayer and Morris Kaplan Family Foundation  
Nixon Peabody LLP  
Northern Trust  
Numerator  
PNC Financial Services Group  
Polk Bros. Foundation  
The Renaissance Foundation  
Salo, LLC  
Serve Illinois  
The Siragusa Family Foundation  
The Vistria Group  
William Blair  
Winston & Strawn LLP

## INDIVIDUAL AND FAMILY FOUNDATIONS

M Anonymous  
Philip\* and Rene Alphonse  
James Anderson

David and Faith Atkins  
Douglas Baird and Julie Gray  
Michael and Bonnie Balkin  
Tracey Benford  
Brian Bentley  
Patrick Biladeau  
Laurie Bischel  
Steel Bokhof and Liz Kirscher  
Martha\* and Timothy Boudos  
Bill Broderick  
Kevin Brower  
Kate Brown  
Kathryn Carter  
Kevin Chadwell  
Ellen-Blair Chube  
Brittney Coats  
Robbin Cohen Gross and Harold Gross  
Bruce\* and Lisa Cohen  
Laura Coy  
Daniel Crowe  
Cindy and Stephen Cruise  
Natalie and Rahul Danak  
Michael Davis  
Tony and Laura Davis and Linden Capital Partners  
John Diamond  
Sarah Dorfman  
Pooja Doshi  
Janet and Craig Duchossois  
John Dugenske  
Holly Duran  
Anita and Morton Efron  
Rick and Allison Elfman  
John Ettelson  
Connie Fan  
Raquel Filmanowicz  
Katherine Finnegan  
Ryan\* and Sarah Flury  
David Fording  
Julia Friedland  
Friedman Family Foundation  
James Furey  
Denise Gaffney-Nawrocki  
David Gaito and Heather Zimmerman  
Vanessa and James Giannis  
Kim Gillespie  
Meg and Thomas Gilster  
Brent and Katie Gledhill  
Leah and Dan Gordon  
Lauren Graf  
Meredith Greenberg ♦  
Rachel and Devin Gross  
David and Sharon Habiger  
Sandra and Craig Hamilton  
Tom Hamilton ♦  
Andrew Hendrie  
Cynthia Heusing and David Kistenbroker  
Sara Hjalmarson Balawajder  
Tim Hohulin  
John Holmes

Craig\* and Rebeca Huffman  
Rebecca Johnston and Jeffrey Maling  
Jim Jones  
Mohit\* and Manali Kalra  
Bernard and Linda Kastory  
Tracy and Daniel Kazan  
Jennifer Keating  
Natalie King  
Claire Knoten  
Karen and Mark Koulogeorge/  
MK Capital  
Kristin\* and Greg Kranias  
Michael Krauss  
John Kreger  
Kelley and Beverly Kruger  
Erika Kubowitsch  
Paige LaCour  
Margot and Josef Lakonishok  
Laura Lanham  
Chris Larson  
Rebecca Laskaris  
Sara Lawler  
Michael Leonardson  
John and Jill Levi  
Carol\* and Larry Levy  
Peggy and Yung Lim  
Linda Litner  
Steven Maletzky  
Gail and Fred Manning  
Joe and Rika Mansueto  
Isabela Marchi  
Brian Markley  
Joan and Jeffrey Matthews  
Kenneth and Jeanne McAtamney  
Evan and Joanna McGinley  
Julia McGovern  
William and Mary Ann McGrath  
Matt and Ashley McKee  
Pramit Mehta  
The Melman Family  
Connie and Michael Molzberger  
Christian Moree\*  
Daniel and Lynn Murray  
Richard and Leslie North  
Trina Ntamere  
Tim O'Brien  
James O'Connor  
Jay and Shawna Owen  
Courtney Owens ♦  
Eric Parmacek  
Dr. Jamie Pasquale  
Doug and Jenny Patinkin  
Tim Pennise  
Robert Pillion  
Martha M. Poorman  
Andrew and Jen Prewitt  
Francine and Gregory J. Purcell  
Patrick Quinn  
Ramkumar\* and Saeswari (Divya) Ramanan  
Ronald Redd  
Thomas Ricketts

Marsha and Roger Ritley  
Donnie and Suzanne Roberts  
Carol Rubin\* and Steven Kaplan  
Tara and Ernie Sadara  
Laura Sage  
Beth\* and Ryan Satterfield  
Chris Schembra  
Stephen and Mary Jo Schuler  
Joseph Schulte  
The Marcee Harris Schwartz and Jon Schwartz Philanthropic Fund of the Jewish Community Foundation of the Minneapolis Jewish Federation  
Marissa Schwartz  
Jeffrey Scott  
Dave Sewell  
Ward and Robyn Sexton  
Michaela and Jeffrey Shaw  
Michael and Ellen Silverman  
John Smart  
Judson Snyder  
Mark Spejewski  
Madeline Spellman ♦  
Julie Steinberg Marton  
Irving Stenn and Judi Male  
Harvey and Mary Struthers  
Jane Sytsma ♦  
Randall Tavierne  
William TenBusch  
Mark and Jennifer Thompson  
Lisa Tiemann  
Danielle Tomassini and Jeremy Schenof  
United Way of Greater Atlanta  
Dita Vinkele Ciacchio  
Keren and Rob Vishny  
Heather Vunovich  
Michael Wallach  
Jane Walsh  
Bonnie Wheaton  
Elliot Wheeler ♦  
Jamie and Kristin Wildman  
Jeffrey and Deborah Wineman  
Nicole Winter  
Adam Wong  
Howard Woolf  
Andrew Yoder  
Debbie Yoder  
Bill and Carla Young  
Lisa Zaborko

## GIFTS IN TRIBUTE

In honor of Emma Herber  
In honor of David Jones  
In honor of Rian Kalra  
In honor of Kristin Kranias  
In honor of Carol and Larry Levy  
In honor of Courtney Owens  
In honor of Christine Poorman  
In honor of Carol Rubin and Steve Kaplan  
In honor of Beth Satterfield

**KEY:** \*National or Local Board Member ♦ Auxiliary Board

## CHICAGO

In honor of Max Satterfield  
In honor of Jessica Wetmore  
In honor of Zachary Yoder  
In memory of Juan Hernandez  
In memory of Nancy E. Fording

### MATCHING GIFT COMPANIES

Google Inc.  
Jones Lang LaSalle  
JPMorgan Chase Foundation  
Robert W. Baird & Co.  
Incorporated  
Tempus Labs  
William Blair

### IN-KIND SUPPORTERS

DRW Trading Group Foundation  
Brett L Paschke  
William Blair

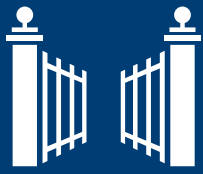
### COMMUNITY PARTNERS

America Needs You  
All Chicago  
Better Future Forward  
Bottom Line  
Braven  
Chicago Public Schools  
Chicago Scholars  
College and Career Access,  
Persistence, and Success  
(CCAPS)  
College Greenlight  
Emerge  
Invest for Kids  
One Million Degrees  
OneGoal  
The Partnership for College  
Completion  
Thrive Chicago  
To&Through Project - University  
of Chicago  
University of Chicago Poverty  
Lab

### Scholarship-Granting Partners

Foundation To Be Named Later  
Promise Scholars Program  
Renaissance Foundation  
Savvas Scholarship Program

# Thank you!



**COLLEGE  
POSSIBLE™**

# Milwaukee Donors and Partners Fiscal Year 2021

Twelve months ended June 30, 2021

## MULTI-YEAR LEADERSHIP GIFTS

### State of Wisconsin

\$1 million over 2 years

### Ascendium Education Group

\$720,000 over 3 years

### Gene and Ruth Posner Foundation

\$60,000 over 4 years

### UW Credit Union

\$50,000 over 2 years

### Bader Philanthropies, Inc.

\$30,000 over 2 years

### A.O. Smith Foundation, Inc.

\$10,000 over 4 years

## CORPORATE, FOUNDATION AND GOVERNMENT FUNDERS

A.O. Smith Foundation, Inc.  
Anon Charitable Trust  
Ascendium Education Group  
Astor Street Foundation  
Bader Philanthropies, Inc.  
Robert W. Baird & Co.  
Incorporated  
Brady Corporation  
The Catholic Community  
Foundation  
Charles D. Jacobus Family  
Foundation  
Cleary-Kumm Foundation, Inc.  
Concordia University Wisconsin  
Croen Foundation, Inc.  
Dorothy Inbusch Foundation  
Ray & Kay Eckstein Charitable  
Trust  
Educators Credit Union  
Enerpac  
Ernst & Young LLP - Milwaukee  
Office  
Four-Four Foundation  
The Gardner Foundation  
Gene and Ruth Posner  
Foundation  
Greater Milwaukee Association  
of Realtors Youth Foundation  
Greater Milwaukee Foundation  
Gruber Law Offices LLC  
Herb Kohl Philanthropies  
Individual Health Solutions, LLC  
Irwin Family Charitable Fund  
Jerome J. and Dorothy H. Holz  
Family Foundation  
Kelben Foundation  
Krause Family Foundation  
Lakeland University  
ManpowerGroup  
Marcus Corporation Foundation  
Mary Martha & Emmett J. Doerr  
Charitable Trust  
Milwaukee Institute of Art &  
Design  
Milwaukee School of  
Engineering

MPS Foundation, Inc.  
Northwestern Mutual  
Foundation  
Ogletree Deakins  
The Richard & Ethel Herzfeld  
Foundation  
Schlitz Park  
Serve Wisconsin  
Stella H. Jones Foundation  
The Brookby Foundation  
United Way Fox Cities  
United Way of Greater  
Milwaukee & Waukesha County  
University of Wisconsin  
- Parkside  
University of  
Wisconsin- Milwaukee  
University of  
Wisconsin- Platteville  
University School of Milwaukee  
UW Credit Union  
We Energies Foundation  
Weiss Family Foundation  
Weyco Group Charitable Trust  
State of Wisconsin

## INDIVIDUALS AND FAMILY FOUNDATIONS

Anonymous (17)  
Mayra Alaniz<sup>0</sup>  
Amanda Albert  
Dawn and Merl Albert  
Meg Albrinck  
Carolyn Amato  
Helen Ambuel  
Susie Apple  
Aileen Aragones  
Laura Arbuckle  
Susan and Bruce Arensmeier  
Michael Baravella  
Leigh Barker-Cheesebro  
Sumanjeet Batra  
Erin Bennett  
Suzan Ben-Poorat and Richard  
Hack  
Ritika Bhatia  
Paula and Jim Bickel  
Mark and Barb Bolens  
Somkhith Boonheuan  
Johannes Britz  
Gerrit Bruni  
Tim Brunner  
Ian Buchanan  
Shannon Burns  
Anne and Jon Butt  
Collier and Jaimee Cannon  
Russell and Shannon Cannon  
Shannon Carallo and Andy  
Komisar  
Steven J. Carini  
Cathy Carlson and Michael  
Bausch  
Angela Carollo and Peter Layde  
Carr Family Fund at the Greater  
Cedarburg Foundation  
Pam and Mike Carroll  
Michael Case  
Gurdial Chadha  
Kelly and Kenny Champagne  
Mike and Carolyn Champagne  
David and Naomi Cobb  
Paige and Dan Conley  
Colton Charitable Fund  
Suzie Considine and Kevin Layde  
Julie and Andrew Copps  
Mario Cortez  
Nico Costa  
Grady Crosby, Jr.  
Grady Crosby III\*  
Sean and Julie Cummings  
Matt Cuozzo  
Anthony Curley  
Kevin Curley  
Mary Ellen and Kevin Curley  
Sheree Dallas Branch  
Rebecca Danner and Barry  
Holloway  
Gabrielle Davidson and Rob Lyon  
Blake Derr  
PJ Dever III  
Amy and Jason Diamond  
Chris and Lori Didier  
Kimberly and Rick Dillon\*  
Draeger Family Charitable Fund  
Yvonne and Mark Dubielak  
Julianna Ebert and Frank Daily  
Haadie Edalatpour  
Haamed Edalatpour  
Sahar Edalatpour  
Kay Eilers  
Emily and Avraham Eisbruch  
Mary Ellen and Jim Comp  
Barb and Dave Ellwein  
Marsha Ernst Krueger  
Thayre Faust  
Meredith Feldman  
Mark Fetherston  
Kennedy Fisher  
Anne and Dean Fitzgerald  
Thomas and Nancy Florsheim  
Family Foundation  
Jennifer and Tom Florsheim  
Molly and David Fritz  
Nancy Fritz  
Barbara N. Fuldner  
Deb and Tom Gannon  
Jackie and David Gay\*  
Susanne and Bill Gay  
Mitchell Gentry  
Mark Gerke  
Julia and Josh Gimbel  
James Gleason  
Bridgett Gonzalez  
Joseph and Gwenn Graboyes  
Charitable Fund of the Door  
County Community Foundation,  
Inc  
Tom and Jan Graham  
Marie Greco  
Bradley Grimmer  
Paolo Guttadauro  
Kelly Haag  
Dorrie and Greg Hagge  
Kyle Hagge

Mae Haggerty  
Mary Haggerty  
Anne Hamilton and Fred Geilfuss  
Steve Hancock  
Brittany Hartl  
Melonnie and John Hartl  
Hartman-Wolff Family  
Margaret Hartwig  
Diane Hatchell  
Katie and Tom Heinen  
Herd-Barber Family Fund at the  
Greater Milwaukee Foundation  
Peter Herms  
William Herms  
Sue and Peter Hitler  
Eric E. Hobbs  
Pat and Jim Hoffman  
Jill and Peter Holbrook  
Christine\* and Barry Holloway  
Kari Houghtaling  
Joanne Ihling  
Kim and David Irwin  
Elizabeth Jackson  
Jan and Frank Janzow  
Susan and Donald Jauquet  
Cassandra Johnson  
Barbara and Louis Johnson\*  
Meghan Johnson  
Montavious Jones<sup>0</sup>  
Greer Jordan  
Lori Kahn  
Ryminhild Kaio  
John and Julie Keller  
Mary and Ted Kellner  
Greater Milwaukee Foundation's  
Judith A. Keyes Family Fund  
Kern Khanna  
Ryan Khanna  
Saira Khanna  
Sangeeta\* and Raman Khanna  
Ariel Kim  
Phyllis and Theodore King  
Kevin Kinney  
Robert Kirst  
Sam Kohnke  
Bradley and Sarah Komisar  
Roberta Koonce  
Laura Koppa  
Paul Koski  
The Michael and Billie Kubly  
Family  
Chip and Sally Kubly  
Sarah and Michael Kubly  
Will Kubly  
Camille and David Kundert  
Becky and Imran Kurter  
Nancy Laskin  
Stephanie Lazarz  
James Lee  
Carly Leigeber  
Brenda and Matt Levatic  
Brad and Anne Lichtenstein  
Marcy Lichterman and Paul  
Florsheim  
The Linzmeyer Family  
Nancy Linzmeyer  
Amy and Michael Lovell

**KEY:** \*National or Local Board Member <sup>0</sup>Current Student or Program Alumni

## MILWAUKEE

Madeleine and David Lubar  
Joan Lubar and John Crouch  
David Lucas  
Jason Makowski  
Sherry & Norm Malmon Donor  
Advised Fund of the Jewish  
Community Foundation  
Ann Margolis  
The David and Donna Marks  
Stewardship Fund  
Louisa Marks and Jerry Flemma  
Michele and Ken Marsh  
Kate Martin  
Suzanne McCoy  
Sarah McEneaney and Bob Smith  
Thomas McInerney  
Connie Meltzer  
Susan\* and Robert Mikulay  
Ronald and Susan Miller  
Joe Mirasola  
Mark Mittenenthal  
Connie and Michael Molzberger  
Helen Moore  
Molly Moore  
Jeff Morin and Brian Borchardt  
Carol Motzel and Robert  
Schwartz  
Carolyn Muckelberg  
Greater Milwaukee Foundation's  
William J. Murgas Fund  
James Narr and Kristin  
Zinsmaster  
Dan Nash  
Nick Nellis  
Andy Nelson  
Karen Nelson  
Susan Nemetz  
Cory and Michelle Nettles  
Amy and Sara Nolan  
Rhonda and Gregory Oberland  
Jackson Oliver  
Janet and Nick Padway  
Renee Pasciak  
Linda and Nish Patel  
Shelley Peppey Bruzas  
Aden Pereira  
Macabee Pereira  
Marcus and Connie Perry  
Laura Petrie Anderson and David  
Anderson  
Jim Phillips  
Candy and Bruce Pindyck  
Anne and Mark Plichta  
Melanie and Frank Popa  
Dr. Keith Posley\*  
Suzanne M. Possell  
Mara and Samuel Poullette  
Patrick Pringle  
Cathy Procton  
Michael Putterman  
Izzy Ramirez  
Joanna Ramirez  
Connie Ramsey  
Ben Rangel  
Jessica Rardin  
Jody Reckard  
Katie Reinhart and David Domres  
Anne Reinke  
Patricia and Allen Rieselbach  
Michelle and Steven Rishel  
Nancy and Michael Roos

Cathy and Mike Roth  
Tracy and Jay Rothman  
Gretchen Rowe  
The William Rudd Family  
Jordan Ruiz  
Matt Runquist  
Katie Sanders  
Keri Sarajian and Frederick  
Stratton III  
Kelly Schaer and Wendel Hruska  
James and Andrea Schloemer  
Jeff Schmaling  
The Marcee Harris Schwartz and  
Jon Schwartz Philanthropic  
Fund of the Jewish Community  
Foundation of the Minneapolis  
Jewish Federation  
Dana Seesel  
John Seesel and Joanne  
Grossman and Family  
Lauren Seesel  
Michele and Richard Seesel\*  
Jane and Johan Segerdahl  
Marsha Sehler  
Dennis Sell  
Cheryl and Andrew Seter  
Mary Sewart  
Francie Shea  
Kellie J. Sigh  
Kyle Sjoberg  
Brenda Skelton and Jim  
Bendtsen  
Anneliese Smith  
Bruce Smith  
Liz Smith  
Josh Smith\* and Beth Graham  
Smith  
Kevin Smith  
M.J. and Andy Smith  
Roger and Judy Smith  
Beth Sousa  
J. Spadafora  
Gina Spang  
Mary Ellen Spiegelberg  
Julie Staffen  
L. William Staudenmaier  
Jennifer and Charles Stearns  
Karen Steggall  
Chris and Willow Stewart  
Lisa Stockmo  
Richard and Susan Strait  
Sue Sugar  
Morgan and Adam Sweet  
Christine Symchych and James  
McNulty  
Leigh and Fred Tabak  
Tiffany Tardy  
Bob Theys  
Kayla Thomas  
Kathy Thornton-Bias  
Catherine Thum  
Alissa Tinney<sup>0</sup>  
David Toles  
John and Kine Torinus  
Jennifer and Ben Townsend  
Denise and Steven Trinkl  
Matthew Tritz  
David and Julia Uihlein Charitable  
Foundation  
Kalia Vang<sup>0</sup>  
Ellen and Robert Venable  
Katy and Dave Vetta  
Carolyn Vidmar  
Keaton Walkowski  
Hannah Wallisch and Justin  
Weber  
Susan and James Weichselbaum  
Tom and Rachel Weis  
Elizabeth Wells  
Laura and James Wigdale  
James and Elizabeth Wigdale  
Madonna and Jay Williams  
Family Fund  
Alison Wilmeth  
Madison Community  
Foundation's Sally Wilmeth and  
Terry Geurkink Family Fund  
Maddy Wilson  
Jon Wolf  
Tong Xiong  
Chue Yang  
Hannah Yaritz  
Sara Yashar  
Lindy Yeager and John  
Florsheim\*  
Dr. Chia Youyee Vang and Tong  
Mabyias Yang  
Rita Zebian  
Sarah and Steve Zimmerman  
Katie and Mickey Zitzmann

### GIFTS IN TRIBUTE

In honor of Kevin Curley  
In honor of Rick Dillon's Work  
In honor of Ben Dubielak  
In honor of Gil Eisbruch  
In honor of David Gay  
In honor of Bonnie Gibson  
In honor of Christine Holloway  
In honor of Billie Kubly and Molly  
Fritz  
In honor of Dr. Mary Kellner  
In honor of David and Camille  
Kundert  
In honor of Susan and Bob  
Mikulay  
In honor of Abigail L Procton  
In honor of Dick and Shelly  
Seesel  
In honor of Tony Shea  
In honor of Joseph Spang  
In honor of Rose Spang  
In honor of Courtney Steggall  
In honor of Emanuel Zinmaster  
In memory of Eric Butlein  
In memory of James C. Hartwig  
In memory of Martha E. Moore  
In memory of Karen B. Rousseau

### MATCHING GIFT COMPANIES

The Bill & Melinda Gates  
Foundation  
CDW  
Charter Manufacturing  
Company, Inc.  
Entergy Corporation  
Johnson & Johnson  
NewRez LLC  
We Energies Foundation  
Wells Fargo Community Support  
Campaign

### IN-KIND SUPPORTERS

Dan Herda Photography  
DigiCOPY  
Jet's Pizza - Milwaukee  
Kalida Williams Photography  
Koss Corporation  
Kroger - Wisconsin Ave  
Kwik Trip  
Milwaukee Brewers  
Milwaukee Bucks  
Starbucks - Ogden Ave.  
Target - Franklin  
Target - West Allis

### SCHOOL AND COMMUNITY PARTNERS

**High School Partners**  
Alexander Hamilton High School  
Casimir Pulaski High School  
Dr. Howard Fuller Collegiate  
Academy  
Harold S. Vincent High School  
Hmong American Peace  
Academy  
Milwaukee High School of Arts  
Milwaukee Lutheran High School  
Milwaukee Marshall High School  
Riverside University High School  
South Division High School  
St. Anthony High School  
St. Joan Antida  
St. Thomas More High School  
Stevens Point Area Senior High  
Wisconsin Lutheran High School  
Pathways High School  
Milwaukee Academy of Science

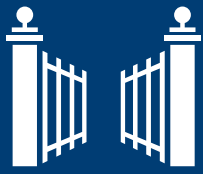
### College Partners

Alverno College  
Cardinal Stritch University  
Carroll University  
Carthage College  
Concordia University Wisconsin  
Lakeland University  
Lawrence University  
Marquette University  
Milwaukee Area Technical  
College  
Mt. Mary University  
Northland College  
University of Wisconsin - Green  
Bay  
University of Wisconsin  
- Madison  
University of Wisconsin  
- Milwaukee  
University of Wisconsin  
- Parkside  
University of Wisconsin  
- Whitewater

# Thank you!

**KEY:** \*National or Local Board Member <sup>0</sup>Current Student or Program Alumni





**COLLEGE  
POSSIBLE™**

# Minnesota Donors and Partners Fiscal Year 2021

Twelve months ended June 30, 2021

## MULTI-YEAR LEADERSHIP GIFTS

**The Cargill Foundation**  
\$1 million over 4 years  
and \$600k over 3 years

**Ascendium Education Group**  
\$990,000 over 3 years

**Otto Bremer Trust**  
\$750,000 over 3 years

**The Richard M. Schulze Family Foundation**  
\$200,000 over 2 years

**Mahle Family Foundation**  
\$150,000 over 3 years

**Tim Carter and Sally Wahman**  
\$100,000 over 3 years

**Securian Financial**  
\$100,000 over 3 years

**George Family Foundation**  
\$75,000 over 3 years

**Allianz Life Insurance Company of North America**  
\$60,000 over 2 years

## CORPORATE, FOUNDATION AND GOVERNMENT FUNDERS

3M Foundation  
Accident Fund Insurance Company of America  
Art and Martha Kaemmer Fund of HRK Foundation  
Ascendium Education Group  
Boston Scientific Foundation  
Chubb  
Cigna Health and Life Insurance Company  
Community Shares of Minnesota  
Continental Casualty Company  
Curtis L. Carlson Family Foundation  
Delta Dental of Minnesota  
The Donaldson Foundation  
Ecolab Foundation  
Engler Family Foundation  
Greater Twin Cities United Way  
H.E. & Helen Warren Foundation  
The Hanover Insurance Group  
Hardenbergh Foundation  
HRK Foundation  
Intact Insurance Group USA LLC  
ITA Group  
Jack and Jill of America, Inc., Minneapolis Chapter  
Joseph C. & Lillian A. Duke Foundation  
The Leonette M. and Fred T. Lanners Foundation  
Lucky Seven MN Foundation  
Marsh and McLennan Agency LLC Company  
Medica Foundation

The Medtronic Foundation  
Minneapolis Kiwanis Foundation  
Minnesota Office of Higher Education  
Nordson Corporation Foundation  
Northrop Grumman Corporation  
NorthStar Education Finance, Inc.  
The Perrigo Company Charitable Foundation  
Piper Sandler  
RBC Foundation - USA  
Risk Administration Services, Inc.  
Royal Credit Union  
The Richard M. Schulze Family Foundation  
Seagate Technology LLC  
ServeMinnesota  
SFM Mutual Insurance Company  
St. Louis Park Sunrise Rotary Foundation  
The Sweitzer Foundation  
Synchrony Financial  
Target Foundation  
The Hartford  
Thrivent Financial Foundation  
U.S. Bank Foundation  
Virginia Johnston Wimmer Charitable Trust  
The Walser Foundation  
Western National Insurance Group  
Wings Financial Credit Union  
Xcel Energy Foundation

## INDIVIDUAL AND FAMILY FOUNDATIONS

Anonymous (40)  
Marit Aaseng  
Abdirahman Abdi  
Sarah Adams and Aaron Salasek  
Jean Adams  
Sylvia Albers  
Susan Alpert  
Diane Amundson  
Eric Anderson  
Jolene Anderson  
Mary Anne Anderson  
Michelle Anderson  
Philip Anderson  
Carlie Andrews and Tim Pure  
Eleanor Andrews  
Tracy and Sam Arnold  
Terrence Ashford  
Lauren Ashwood  
Maureen Ayers Looby and Matthew Olson  
Rodney Baakkonen  
Marion Bachrach and Jonathan Siegfried  
Tom Bacig and Barb Perushek  
The Julie and Doug Baker, Jr. Foundation  
Alec Bakke

Alex\* and Sarah Bakkum  
Kumar Balasubrahmanyam  
Marie Barnett  
Diane Barr  
Morgan Bartlett  
Margaret Bartz and Bruce Anderson  
Paul and LaVonne Batalden  
Patricia and Bernie Beaver  
Josh Becerra  
Mary Becker  
Lisa Beckham  
Kristin Beckmann and Robert Richman  
Katie and Cyrus Behroozi  
Sarah and Joseph Beier  
Ann Bellows and Charles Wikelius  
Sharon Benmaman and John Allen  
Nancy Benson  
John and Ruth Bergerson Family Fund of The Minneapolis Foundation  
Alan Bergman  
Rebecca and Thomas Bergman  
The Bergsland Rose Family Fund  
Chloe Bergstrand  
Elaine Bernards  
Paul Berning  
Ruth and Michael Bettendorf  
Laura Black  
Julia Blount  
Erin Bofenkamp  
Bohmann/Riehle Family Fund of The Minneapolis Foundation  
Judy and John Bonnes  
Regina Bonsignore and Rick Garber  
Jenee Boyer  
Erik and Hanna Brandt  
Patti Brase  
Abra Brisbin  
Martha Britton  
Katie Brogan  
Katie Brokaw  
Jennifer Brooks  
Amy Browender  
Sue and Wolfie Browender  
Barbara Brown  
Katherine Brown  
Natalya Brown<sup>0</sup>  
James A. Bryan Jr.  
Bridget Budig  
Karen Buehre  
Kelly Bukowski  
John Bultena  
Heidi and Stephen Burch  
The Burdick Family Fund of The Minneapolis Foundation  
Linda Burich and Gary Lynn  
Kara and Michael Caccuitto  
Carolyn Cahill  
Susan Calmenson  
Krystel Calubayan

Mark and Heidi Carlson  
Matt Carlson  
Anne and Tom Carrier  
Tim Carroll  
Courtney Castleberry  
Catherine Cella and John Ellingboe  
Kathleen and Paul Cerkvenik  
Margaret and Cecil Chally  
Pam and John Chandler  
Eva and Wally Chapman  
Katherine and Sebastian Cherian  
Gail Chester  
Regina Cho and Geoffrey Getnick  
Marge and Jack Christensen  
Sandy and Jim Christenson  
Katharine Christianson  
Laine Ciaramitaro  
Elizabeth Ciner and David Schodt  
Kayla Clark  
Paula and Greg Clark  
Cleveland Stack Giving Fund  
Caroline Closmore  
Bob and Diane Coderre Family Fund of The Saint Paul Foundation  
John Coleman  
Sonja and A.J. Colianni  
Beth and Jonathan Commers  
Jessica Conklin  
Dan and Ali Conlin  
Elizabeth Conway and Matt Kane  
Laura and Benjamin Cooper  
Belinda Cordina  
Keith and Judy Covey  
Nunciata and Rob Covey  
Page and Jay Cowles  
Brad and Catherine Draper  
Jennifer Cox Johnson and William Johnson  
Barbara Cox and Joe Bagnoli  
Carin Crego-Faul  
Sue Crolick  
Shannon Cron  
Kitty and David Crosby  
Marcos and Alysse Cruz  
Mark Cullen  
Liz and Austin Cumblad  
Sally and John Cuninghame  
Mary Jane Curran  
Andrew Currie  
Laura Curtis and Dan Revelle  
Ted and Carol Cushmore Family Fund of The Minneapolis Foundation  
Thaddaeus Dahlberg  
Jacob Dalager  
Nick Dalton  
The David Winton Bell Foundation  
Jean Davis  
Dr. Joy Davis  
Monica and Charles Davis  
Susan Davis

**KEY:** \*National or Local Board Member <sup>0</sup>Current Student or Program Alumni  
♦ Corps Alumni Council Member, Alumni Leadership Council Member

## MINNESOTA

Julia Dayton Klein	Daniel Geiger	Julie Holmen	Arnold Kpoto <sup>0</sup> ♦
Ann Dayton	Darielle Gengler-Hanson	Laurel Holschuh and John Grimstad	Judy Krause
Sherry Ann and Edward Dayton	Leslie Gentner	David and Meredith Homans Charitable Fund	Julia Kreger
Joyce De Georgeo	Heidi Gesell and John Edgerton	Michelle and David Horan	Patricia Kriha
Jerome Degerness	Rene Gesell	Dorothy J. Horns and James P. Richardson Family Foundation	Jayden Kulhawy
Amie DeHarpporte and Jason Zimmerman	Cynthia and Bob Gilbertson	Nick Hoverstad	Joanne Laird
Jodi and Scott DeToffol	Lynda Girouard	Ann and James Howard	Felice Jo Lamden
Jeffrey and Kate Diamond	Timothy Gluszak	Sally Howard	Nancy Lamden
Janet and Steve Dietrich	Randy Goetz	Kathleen and William Howard	Robert Lamm
Diane Dingley	Kathleen Gohlke and Tim Raducha-Grace	Melissa Howland	Susan and Robert Laney
Gail and James Dixon	Dr. Stanley and Luella Goldberg	Brent Huberty	Ron and Nancy Langness
Dan Dodge	Michele Goodson	Linda and Joshua Hummel	Danny and Morgan Langseth
Mary Dolan	Davi Gordon	Rachel Hummel	Chad M. and Rafina Larsen / Larsen Fund
Renee Domingo	Paul Gore	Alisha Hwee	David and Janis Larson Foundation
Tim and Amy Domini	Laura Gould	Brandy Hyatt <sup>0</sup>	Teri Larson
William Donohue and Jane Prohaska	Cheryl Gracey and Steven Carroll	Charles Iadaresta	Sanjiv Laud
David and Katie Dorn	Blake and Jan Grangaard	Nancy and Douglas Imholte	Julie Laven
Mary and Ernest Dorn	Margot and Paul Grangaard	Catherine and Kim Jackson	Jane and Brian Lavin
Douglass Brandenburg Family Foundation	Charlie Greenman	Donald Jakes	Rita and Bill Lawson
Ryan Dugan	Paul Gregoire	Kirsten Jamsen	Joann and Don Leavenworth
Ann and Doug Duin	Mike and Shanda Groppetti	Jerstad Family Foundation	Erica Ledesma
Seth Duin	Pam and Charles Grossman	Jasmine Jirele*	Chee Lee <sup>0</sup>
Stanley and Doris Hill Fund	Elle Grothaus*	Riley Johnson Ries	Douachee Lee* <sup>0</sup> ♦
Alyce Eaton	Cory and Mark Gunderson	Alissa Johnson	Kacia and Willy Lee
Leslie and Todd Eberhardt	Ruth Hafoka	Dr. Ann Johnson	Rose Leese
Bart and Rebecca Eddy	Scott Hagg	Peggy and Dave Johnson	Neil Leibundguth
Patrick Edeburn	Elizabeth Hagstrom	Emily Johnson	Vince Leo
Emre Edev	Marianne and Beach Hall	Scott and Marjorie Johnson Fund of The Minneapolis Foundation	Lucy LePeau
Angela and Mark Eilers	Sandy and Tom Hamel	Paige Johnson	Peggy and Ilo Leppik
Joern Engberding	Elaine and Stan Hansen	Pamela and Dwight Johnson	Tyler J. Leslie
Rondi Erickson	Justin Hansen	Susanna Johnson	Marilyn K Levinger
Wanda Erickson	Karin Hanson	Heather Johnston and Jason Koch	Jacob Levy-Pollans
Nathan and Anne Ersig	Henry Hanten	Eric Jolly	Phil and Frances Lewenstein
Rebecca Ervasti	Kent Harbison	Lucy R. Jones and James E. Johnson	Brad Lewis
Megan and Joe Eskola	Keith Hardy	Todd Jones	Parker Lewis
Alan Eskuri	Lindsey Harms	Laura and Westcott Jones	Judy and Steve Lewis
Ann Etter	Barbara and Ron Harris	Sherene Judeh	Anna Lieder
Jane and John Evans	Seth and Kate Harris	Owen Justice	Susan Lighthart
Laura and Jordan Evans	Mark Harrison	Thulani Jwacu	Brian Lindeman and Ami Berger
Katherine Evenson	Helen and Bill Hartfiel	Sorany Ka <sup>0</sup>	Tristen and Steve Lindemann
Jessica and Jeremy Exley	Rowena Hartman	Phyllis Kahn	Nathaniel Lindley
Allie Fan	Leah Harvey	Stephen Kaminski	Stephen S. Lindley and Sarah A. Frank Lindley
Anna Farrell and Josh Lambrecht	Jan Haugland and Bill Horne	Darla Kanning	Anne Lockner Bernat
Sue and Michael Favilla	Jean and Wayne Haut	Casey Karye-Haddy	Daniel Lockren
David Feinberg	Lucas and Alice Havens	Ruth Katz	Susanna and Tim Lodge
Diane and Bruce Fenster	Hawn Family Fund of The Minneapolis Foundation	Arthur Katzman	Laurie and Paul Lokar
Concha Fernández del Rey	Eagan Heath	Ben Kaufman	Ann Longfellow and Austin Bryan
Susan Feulner	Steven Hebl	Jane and Jim Kaufman Fund of The Minneapolis Foundation	Mari and Tom Lowe
Rebecca L Fillinger	William Hefner	Thea Keamy	Rebecca Lueck
Catherine Finch	Katherine Heise	Suzanne and James Kelleher	Margaret Mac Gregor
Laura Fingerson	Emily Heitner	Erin Kellogg	Mike and Beth MacDonald
Mark Fingerson	Tripti and Justin Helsley	The Jane Stein Kerr Family Fund	Kathleen and David MacLennan
Ruth Fingerson	Bruce Henderson* and Tessa Flynn Henderson	Arjun Khakhar	Kathi and Stephen Mahle
Colleen Finnegan and John Woerner	Danielle Hennen	Kevin Kienbaum	Kate Maier
Amy and Greg Fitzharris	Ashley Her	Kathy and Todd King	Alyssa Markle
Krysta Flaharty	Ben Herman	Lindsey King	Craig Martin
Linda and Frederic Foster	Carolyn Herman	James and Nina Kinnear	Kathy and George Martin
Meaghan Foster	Meghan and Dan Hermes	David Kittelson	Sarah and Rob Martin
Grace Fowler	Natalia* and Bobby Hernández	Brendan Klein	Melissa Martinson
Abigail Fox	Tori Hernandez and Grant Williamson	Kathryn Klibanoff and Jeremy E. Pierotti	Adron Mason
Hannah Fox	Kathryn Heuer	Sen. Amy Klobuchar and John Bessler	A. Thomas and Nona B. Mason
Scott Frantzen and Debra Pogue	Beverly, John and Erin Heydinger	Jessica Knight	Betsy and John Massie
Gretchen Freeman	Stephanie Hiatt	Carissa and Matt Knutson	Rick and Mo Massopust
Stuart Fricke	Carrie and Rich Higgins	Eydie Kooiman	Inez Matheson
Beth Friend and Ari Feldman	Joan Higinbotham	Luanne Koskinen	Erik Mayr
Alan Gaffaney	Mary Hill		Chris and Ruth Mayr
James and Kathy Ganley	Sarah Hilton		Holly Ager and Robert McCabe
David Gardner	Claire Hipkens		Michael McCalib
Christine Garrison	Lane Holden		Marcella McCalmont
Stephanie Garrison			Julie McConnell

**KEY:** \*National or Local Board Member    <sup>0</sup>Current Student or Program Alumni  
 ♦ Corps Alumni Council Member, Alumni Leadership Council Member

## MINNESOTA

David McCorkell	Dee Olateru*	Joan and John Rex	Sarah and Kevin Shriver
Alexander McCormick	Shannon Oldenburg	Nancy and Kevin Rhein	Ulysses Sibo
Zenaida and Matt McCoy	Claire Olson	Tasha Rhoads	Janice and Alan Sickbert
Sharon McDaniel	Jane Olson	The Carleen Rhodes Fund of The	Sam Sickbert
Ann McDonald	Tim Olson	Saint Paul Foundation	Robert and Margaret Simmet
James McDonald	Brian O'Malley	Denise Rice	Family Fund of the Catholic
Erica and Tim McDougall	Rhonda and Rory O'Neill Fund*	Kristine Richardson	Community Foundation
Joel McFarland	Brian O'Rourke	Justin Richie	Jessica Simmons
Dick and Joyce H. McFarland	Jessica Ortiz	Philip Rickey	Robert Simmons
Family Fund of The Minneapolis	Cheryl and Mel Orwig	Brooke Rivers	Dawn Simonson
Foundation	Kristina and Jeff Ostrom	Wendy and Doug Robbins	Svetlana Simovic and Gregory
Peter ♦ and Sara McGarraugh	Andy Otness	Timothy and Sylvia Robinson	Filice
Kathleen McGee	Nancy and Mario Paez	Marie and Rick Rodier	Susan and Gary Singer
Michele McGraw and Tony	Marcia Page and John	Meg and Tony Rodriguez	Howard Sinkler and Juile D.
Dodge	Huepenbecker	Sandra Roe	Townsend
Mike and Charlene McHugh	Catherine and Louis Paglia	Talesha Roehler	Shata Sisaleumsak <sup>0</sup>
Kay McLean	Mary and Jack Parcheta	Joyce and Brent Roesler	Andrei and Wendy Sivanich
Megan and Rob McNabb	Patti and Daniel Paris	Clare and Colin Roney	Andy M. Sjerven
Melanie and Scott McRae	Jeffrey and Karen Parkhill	Jennifer E. Rooney	Rachel Sjodin
Sarah Meister	Jonathan Parshall and Margaret	Francie and Barry Ross	Jarell Skinner-Roy
Nicole and Paul Melancon	Sullivan	Kelly Ross	Rebecca Skoler and Steven
Bonnie Melville and Dan Terlouw	Ali Parsons and Corey Towle	DB and Maggie Rouse	Stovitz
Kate Menendez and Dan Rogan	Joan Bennett Parsons	Ann Rukavina Fleming	Glen and Anna Skovholt
Cody Menning	Kelsey Parsons	Scott and Sarah Russell	Smikis Foundation
Sharon T. Merritt	Caitlin Patterson and Rich Price	Thomas Russo	Winifred Smith and David
Ann Marie Mershon	Michael and Jo-Ann Paul	David Saarela	Lillehaug
Karen and John Meslow	James A. Payne Fund of The	Willy Sanavongsay	Bennett Smith
Kelsey Midthun	Minneapolis Foundation	Steve Sandell	Noah Smith
Erich Mielke	Laura Pennycuff and Sander	Miriam and David Sanders	Spencer Sokoly
Dana Miller	Glick	Annette and Victor Sandler	Samantha and Collin Solberg
Dolores and Harold Miller	Don Perkins and Elise Eslinger	Karen and Steve Sanger	Nancy and Richard Solum
Jill and Andrew Miller	Carol Peterson and Darren	Adam Saputra <sup>0</sup>	Elizabeth Songalia
Kathryn and Terrence Miller	Acheson	Scott* and Patti Savoy	Megan and Brian Sostek
Kristen Milner	Erica and John Peterson	Brittany Savoy-Nurnberger	Jane Sovren and Ronald Meister
Janna Mintz	Russell Petricka	Nina Sayer and Alexander	Alicen Burns Spaulding
Brian Mitchell	Shanae Phillips ♦ and Joe Wax	Rothman	Donna and David Spencer
Fredrica and David Montgomery	Buzz and Carolyn Pierce	Esther Schak	Mr. and Mrs. John M. Stafford
Annie and Floyd Moore	Ben and Ashley Pierson	Roger Schelper	Staley Family Foundation*
Laura and Bob Moore	Cindy and Tad Piper	Mary and David Schilli	Samantha Stanaway
Lisa and Michael Moore	Lindsay Pluger	Joanna Pratt	Karen and Raymond Stanchfield
Pamela and Mark Moret	Elise Pokel	Ken Schoenike	Adela Steffen
Amy and Jim Morrell	Sally B. Polk	John Schomberg	Meaghan Stein
Linda and Whitley Mott	Kevin Pollock	Debbra and Lee Schoneman	Jenny Steinke
Leng Moua <sup>0</sup>	Dave Pontious	Paul Schroeder	Karen Stephens
Satoko Muratake and Andrew	David Pote and Linda Eugster	Steve and Tami Schroll	Jill and Rich Stever-Zeitlin
Favilla	Paul and Abigail Pribbenow	Rebecca Schultheis	Marian and Percy Stiles
Lynn and Terry Myers	Prince Family Fund of The	Judith and Steven Schumeister	Dana and Cormac Strahnsen
Judy and Ted Nagel	Minneapolis Foundation	The Schurtz-Ford Charitable	Sharon and Richard Strate
Sierra Napoli ♦	Pritchard Properties LLC	Fund of the Ayco Charitable	Shea Stremcha Legacy Fund of
Ed Nater	Dr. Michael Ptacek	Foundation	The Minneapolis Foundation
Laurie Neff	Eileen and Richard Pursley	Marianne Schwalen	Lori Sturdevant and Martin Vos
Mary and Gary Nelsetuen	Virginia Quintana	Alex Schwappach	Ann and Dan Sullivan
Berit Nelson and Blake Hoel	Mary Radford and Robert Dana	The Marcee Harris Schwartz and	Joan Sundquist and Jim
Christopher Nelson	Anna Rafferty	Jon Schwartz Philanthropic	Southwick
Dee Anne and Robert Nelson	Curtis Rahman and Cindra	Fund of the Jewish Community	Graham Sutherland ♦ and Laura
Lisa Nelson	Jurgensen	Foundation of the Minneapolis	Moulton Sutherland
Sharon Nelson	Denise Rahne and Thomas	Jewish Federation	Lee Swearingen
Debra and Mike Newman	Reinartz	Paul Scobie and Teresa Thews	Peggy and Caesar Sweitzer
Brandon Ngo <sup>0</sup> ♦	Erin Ramsey	Theresa and Dave Scocca	Barb Symalla
Shaylin Nguyen ♦	Jas Rao	Kimberly and Robert Scott	Angie and Steve Tan
Sandra and Mark Niblick	Brynn Rathjen	Christine and Donn Scroggins	Mark Taylor
Lauren Nichols	Brenda Ray	Shelley Segal	Amanda and Mark Tempel
Judy and Daniel Nuese	Rinal Ray* and Getiria Onsongo	Miriam Segall	Anne and James Terzo
Oak Grove Foundation	Joselyn Raymundo and Sean	Sharon Sethna	Sandra Testin
Jane and Robert Oberrender	McCauley	Amy Shah	Nisa Tharayil
Lisa and Jerry O'Brien	Anil Reddy and Nadine Czoschke	Shea-MacIlravage Fund	Anna Thayer
Jane O'Brien	Kelley Redmond	Bronwyn Sherwood	Theisen Infinity Foundation
Michaela O'Brien ♦	Kimberly and Bart Reed	Syrah Sherwood	Sith Thephanonxay
Sarah and Andrew Odegaard	Nancy V. Reed	Carol and Tom Shield	James Thom
Elizabeth Odette	Diane Reindl	Rowzat Shipchandler and Max	Kay Thomas and Jim Rustad
Michele O'Kane and Richard	Susan and Charles Reinhart	Keller	Adam Thomas
Rosenberg	Sharyl and Ralph Reinheimer	Beverly Shivers	Mary Thorpe-Mease and Bill
Barry Okane	Emily Resseger	Nathan* and Veronica Shore	Mease

**KEY:** \*National or Local Board Member    <sup>0</sup>Current Student or Program Alumni  
 ♦ Corps Alumni Council Member, Alumni Leadership Council Member

## MINNESOTA

Sylvia and Gerald Timian  
Carol Tollefsrud  
Sheila Torney-Rockne and  
Thomas Rockne  
Hilma Torres  
The Family of David L. Torrey  
Thanh Tran  
Trenda Family  
Jim and Katie Triggs  
Kelsey and Adam Tritabaugh  
Hien Truong  
Andy Tso  
United Way of Greater Atlanta  
Christian and Leslie Vaillancourt  
Nancy and Gary Van Cleve  
Lowell & Mary Van De Riet  
Family Fund of The Minneapolis  
Foundation  
Abby Van Meveren  
Jamie Van Nostrand  
Susan Van Zanden  
Donna and Robert Vanderhoof  
Nicole VanEnglehoven-Toal and  
Patrick Toal  
Mai Chong Vang  
Mai Yer Vang  
Pahoua Vang<sup>0</sup>  
Richard Vang  
Shenyeng Vang<sup>0</sup>  
Zer Vang<sup>\*0</sup> and Dao Yang  
Teri and Steve Velner  
Margaret Verlautz  
Karen Viskochil Fund of The  
Minneapolis Foundation  
Doua Vue  
Lee Vue<sup>0</sup>  
Maya Vue<sup>0</sup> and Daniel Heu  
Angela Wachira<sup>0</sup>  
Andrea and George Wahman  
Jill and Jack Wahman  
Bob and Sharon Wahman  
Karen Wahmanholm  
Sheila and John Walsh  
Judy and Bill Walter  
Gail Waltz  
Theresa and Lyle Ward  
Deacon and Jenny Warner  
Mitchell Warren  
Kristi and Conrad Wasmer  
Ann Webster  
Chuck and Nancy Webster  
Emily and Robb Weidemann

Libby and Bob Weil  
Liz and Tim Welsh  
Sonja Wermager  
Mary and David West  
Dean Westad  
E.J. Wexler Fund  
Kate and Eric Whittington  
J. K. Wiedemeier Bower and M. A.  
Bower  
Claudia Wielgorecki and Tom  
Fisher  
Frances and Frank Wilkinson  
Dennie Williams  
Paul Willison  
Geoff Wilson and Emily  
Poskie-Wilson  
Pamela J. Wischkaemper  
David Wise  
Lou and Hank Witman  
Carol and Daniel Wolfe  
Janet and Lee Woolman  
Ann Wynia  
Sandy Xiong  
Abby Yang  
Blia Yang<sup>0</sup>  
Chewmeng Yang  
Diamee Yang  
Jess Yang  
Scott Yang<sup>0</sup>  
Steven Yang  
Xong Yang<sup>0</sup>  
Helen Young Kouba and Rod  
Kouba  
Martha Young and Bill Hanson  
Thomas and Jeanne Young  
Xiaoyun Yu  
Yongyi Yu  
Carrie and Jay Zack  
Elisabeth Zarnoti and Sean  
Ramsey  
Susan Zeisel  
Karen Zentner Bacig and Ed  
Bacig  
Margo and David Zentner  
Lynn Zentner  
Jon and Mary Zimmer  
Marie and Nathan Zimmerman  
Heather Zink  
Shirley and Randall Zipf  
Matthew Zlatnik  
Phyllis and Allen Zumach

### GIFTS IN TRIBUTE

In honor of Karen and Ed Bacig  
In honor of Chloe Bergstrand  
In honor of Lorie Bergstrand  
In honor of Tim Carter  
In honor of Steve Fenster and  
Jade Hoyer  
In honor of Helen Kouba  
In honor of Jeremy Levinger  
In honor of Erich Lippert's  
"UnBirthday"  
In honor of Hannah Lodge  
In honor of David and Kathleen  
MacLennan  
In honor of Tauby Mintz  
In honor of Laura Myers  
In honor of Rhonda O'Neill  
In honor of Jeff Ostrom  
In honor of Keliyah Perkins  
In honor of Lindsay Pluger  
In honor of Denise Rahne  
In honor of Vic and Annette  
Sandler  
In honor of Veronica and Nathan  
Shore  
In honor of Shata Yang  
In honor of Katherine Sivanich  
In honor of Anna Smith  
In honor of Sam Solberg  
In honor of Richard Walker  
In memory of Rick and Anne  
Cronin  
In memory of Frank H. Klein  
In memory of David Garrison  
In memory of Bill Shoemaker  
In memory of Richard Blair  
Hartman  
In memory of David Laird  
In memory of Mary Ann  
MacLennan  
In memory of Stephen Matushak  
In memory of Thomas Merritt  
In memory of Bruce Nawrocki  
**MATCHING GIFT COMPANIES**  
3M Foundation  
Ameriprise Financial  
Arthur J Gallagher Foundation  
Best Buy- Your Cause Paying  
Agent  
Blue Cross and Blue Shield of  
Minnesota Foundation

Cargill Corp.  
Dorsey & Whitney Trust  
Company LLC  
General Mills Foundation  
Larkin Hoffman Daly & Lindgren,  
Ltd. Foundation  
McKinsey & Company, Inc.  
The Medtronic Foundation  
PG&E Corporation  
Piper Sandler  
Securian Financial  
Thomson Reuters  
Thrivent Financial Foundation  
The Toro Company  
The Travelers Companies, Inc.  
UnitedHealth Group  
Wells Fargo Community Support  
Campaign

### IN-KIND SUPPORTERS

Jim Geary & Associates  
Target - Bloomington  
Target - Burnsville  
Target - Coon Rapids  
Target - Edina  
Target - Midway  
Target - Minneapolis  
Target - New Brighton Blvd  
Target - North Saint Paul  
Target - Northtown  
Target - Oakdale  
Target - Plymouth  
Target - Richfield  
Target - Roseville  
Target - Shoreview  
Target - St. Paul  
Target - Vadnais Heights  
Target - Valley Creek Plaza  
Woodbury  
Target - Woodbury

### SCHOOL AND COMMUNITY PARTNERS

College Possible Minnesota  
thanks our 67 high school  
partners, 25 college partners  
and many community partners

# Thank you!

**KEY:** \*National or Local Board Member <sup>0</sup>Current Student or Program Alumni  
◊ Corps Alumni Council Member, Alumni Leadership Council Member





**COLLEGE  
POSSIBLE™**

# Omaha Donors and Partners Fiscal Year 2021

Twelve months ended June 30, 2021

## MULTI-YEAR LEADERSHIP GIFTS

**Peter Kiewit Foundation**  
\$750,000 over 3 years

**Anonymous**  
\$600,000 over 3 years

**Mammel Family Foundation**  
\$150,000 over 3 years

## CORPORATE, FOUNDATION AND GOVERNMENT FUNDERS

Anonymous (2)  
American Family Insurance  
Bank of the West  
BNSF Railway Foundation  
Genentech  
The Holland Foundation  
The Kroger Company  
La Vista Community Foundation  
Lozier Foundation  
Midlands Community Foundation  
Mutual of Omaha Foundation  
Peter Kiewit Foundation  
Richard Brooke Foundation  
Rotary Club of Omaha West  
Scheels  
The Sherwood Foundation  
Serve Nebraska  
State Farm Insurance  
Together A Greater Good (TAGG) LLC  
U.S. Bank Foundation  
Union Pacific Foundation  
United Way of the Midlands  
Veridian Credit Union

## INDIVIDUAL AND FAMILY FOUNDATIONS

Anonymous (8)  
Sarah Antonello  
Rebecca Armstrong  
Jack Becker\* and Lester Katz  
Jerry and Karen Bexten  
Brandi Blunk  
Aileen Brady  
Heidi Brammer  
Jeanne and Darwin Brown  
Roberta Burns-Bierwirth  
Sean Caulfield  
Rose Christiansen  
Mike Clemons  
Trudi Crosby  
Elizabeth Cunningham

Jeanne Cunningham  
John and Becky Dagle  
Claudia and Tony Deeb  
Gray Derrick  
Gregory Emmel  
Katie Fagan  
Kerry Fina  
Arvin Frazier III and Vershelle Frazier  
Karen and Bruce Garver  
Kathryn Gergely  
Jianqiang Hao\*  
Jack Hardwick  
Julianne Harm  
Roger Harris  
Heider Family Foundation  
Laura Heisterkamp  
Rebecca Hinton  
Susan Hollman  
Linda Hunt  
Grant and Sara Janke  
Victoria Kohout  
Robbi Kolnick  
Lisa\* and Robert Lackovic  
Kathryn Lalley-Dewell  
Jim and Regina Lehnhoff  
Selena León  
Emiliano\* and Shannon Lerda  
Kathryn Luedke  
Marjorie and Preston Maas  
Peter Madrigal  
Brenda Malott  
Kate Malott  
Mammel Family Foundation  
David Manny  
Ken Mayer and Cindy Lee Christensen  
Kaitlin Mayhew  
Jeff\* and Rachel McGinn  
Emily McGuire  
John Melingagio  
Mike and Sharon Mendlick  
Stevanne Milbourne  
Carolyn Miller  
Monica Mitchell  
Bradley Moore  
Megan Moslander  
James Narr and Kristin Zinsmaster  
Joe Naus  
Sharee and Murray Newman Fund  
Julie Phillips  
Joely Pope

Mandi Prichard  
Kitty and John Ransom  
BJ Reed  
Debra Robinson and Cynthia Apodaca  
Edward and Lida Robinson  
Charitable Trust  
Ryan Rosenquist  
Matthew Sandbulte  
Katie Sanders  
Tyler \* and Alicia Schlumpf  
Lynn Schneider  
Dianne and John Scott  
William and Ruth Scott Family Foundation  
Peter and Michele Silberstein  
Todd and Betiana Simon  
Jeannine and Roger Sindt  
Martha and David Slosburg  
Nichole Small  
Daniel Smolinski  
Adam Solyst  
Melissa Stebbins  
Erika Sudyka  
Kurt Sumerfelt  
Dr. James Sutfin  
Jann and Lawrence 'Red' Thomas  
Kenneth Thomason  
Phyllis and Delmer Toebben  
Madalyn Torline  
Allyson and Jason Triplett  
The Valek Family  
Carly Wacker  
Weitz Family Foundation  
Chris Wengert and Katie Cunningham  
Wendy Whalen  
Bob and Kim Whitehouse  
Nancy Williams  
Rachel and Gordon Wise  
Susan Witkowski

## GIFTS IN TRIBUTE

In honor of Brandi Blunk  
In honor of Elizabeth Dagle  
In honor of Bill Davis  
In honor of Arvin Frazier  
In honor of Emanuel Zinsmaster  
In honor of Papillion-La Vista High School Class of 2014  
In memory of Beverly Bloom Fellman  
In memory of Ken Mayer

## MATCHING GIFT COMPANIES

Blue Cross and Blue Shield of Nebraska  
TD Ameritrade  
U.S. Bank Foundation  
Union Pacific  
Verizon

## IN-KIND SUPPORTERS

Heather Abbott  
Genentech  
Kylie Gumpert  
Kiewit Corporation  
Dominique Williams<sup>0</sup>

## SCHOOL AND COMMUNITY PARTNERS

### High School Partners

Bellevue East High School  
Millard South High School  
Omaha Benson High Magnet School  
Omaha North High Magnet School  
Omaha Northwest High Magnet School  
Omaha South High Magnet School  
Papillion-La Vista High School  
Papillion-La Vista South High School  
Ralston High School  
Westside High School

### University Partners

Doane University  
Metropolitan Community College  
Nebraska Wesleyan University  
University of Nebraska at Omaha  
Wayne State College

# Thank you!

**KEY:** \*National or Local Board Member <sup>0</sup>Current Student or Program Alumni



**COLLEGE  
POSSIBLE™**

# Oregon Donors and Partners Fiscal Year 2021

Twelve months ended June 30, 2021

## MULTI-YEAR LEADERSHIP GIFTS

**Portland Children's Levy**  
\$369,560 over 4 years

**The Ford Family Foundation**  
\$200,000 over 2 years

**Marta and Ken Thrasher\***  
\$155,000 over 5 years

**James F. & Marion L. Miller Foundation**  
\$150,000 over 2 years

**Legacy Health Systems**  
\$150,000 over 3 years

**Meyer Memorial Trust**  
\$150,000 over 2 years

**Silver Family Foundation**  
\$120,000 over 3 years

## CORPORATE, FOUNDATION AND GOVERNMENT FUNDERS

Alaska Airlines Foundation  
Arnold Salter Family Foundation  
Bank of America Charitable Foundation, Inc.  
The Collins Foundation  
First Interstate Bank Foundation  
The Ford Family Foundation  
Franz Bakery Foundation  
Harold & Arlene Schnitzer CARE Foundation  
The Healy Foundation  
Henry Lea Hillman, Jr. Foundation  
The Holzman Foundation  
iQ Credit Union  
The Irwin Foundation  
Jackson Foundation  
Kwitman Family Foundation  
Legacy Health Systems  
Mercer Advisors  
Meyer Memorial Trust  
James F. & Marion L. Miller Foundation  
New Seasons Market LLC  
NW Natural  
OCF Joseph E. Weston Public Foundation  
OnPoint Community Credit Union  
Oregon Volunteers  
Pacific Power Foundation  
PGE Foundation  
Portland Children's Levy  
Trail Blazers Foundation Fund of The Oregon Community Foundation  
The Renaissance Foundation  
The Reser Family Foundation  
Rogers Family Foundation  
Silver Family Foundation  
The Standard Charitable Foundation

State Farm Companies Foundation  
The Herbert A. Templeton Foundation  
Rose E. Tucker Charitable Trust  
Umpqua Bank  
United Way of the Columbia-Willamette  
US Bank Foundation  
Wildhorse Foundation  
Willamette Week  
The Windermere Foundation  
Women of AT&T Inc.  
Zera Foundation  
Zidell Family Foundation

## INDIVIDUAL AND FAMILY FOUNDATIONS

Anonymous (7)  
Melisa Abesa and Thane Shetler  
Lily Abood and Adam Taylor  
Kay and Roy Abramowitz  
Swati Adakar  
Maggie Allen  
Clark Anderson and Pam Baker  
Petra Anderson  
Sona Karentz Andrews\*  
Joseph Anthony & Heidi Yorkshire Giving Fund  
Ruby Apsler  
Tom Armstrong  
Marla Baggetta  
Pat and Dan Baker  
Sue Baker  
Erin and Evan Balbier  
Lynne and Dave Bangsund  
Bruce Barbarasch and Kate Haas  
Dan Bartlett  
Jan and Gary Barnes  
Sarah Barr  
Kerra Bartlett  
James and Heather Bartos  
Jane Bartosz  
Miranda Bartosz  
Cindy and George Baskerville  
Ms. Robin Beavers\*  
Andrea Beck  
Cristina Beck  
Robert and Stacy Bennetsen  
Wendy Berger  
Ilse Berkeley  
Rachael Berkeley  
Rebecca Beshoar  
Betsy Priddy Fund  
Kabir Bhatia  
Diana Bianco and Anthony Effinger  
Todd Biddle  
Jennifer Bildersee and Jay Anderson  
Stephanie and Scott Birdsall  
Shannon and Bob Blackey  
Nicole Blanco-Mills  
Brittany Bode  
Karl and MaryAnn Boehmke

Chris and Lee Bonner  
Thomas<sup>o</sup> and Kirsten Bookman  
Gene and Layton Borkan  
Ann Brayfield and Joseph Emerson  
Verlea Briggs  
Charles<sup>o</sup> and Beth Brod  
Daniela Brod  
Harry and Courtney Brod  
Karina Bruzzese  
Gregory and Colleen Bryant  
Francisco and Heidi Bueno  
Nina and Javier Bueno  
Margaret and Jeffrey Bugler  
Alexis Buhler  
Darius Burke  
Sara Burke  
Maggie Burks  
Burns Family Fund of The Oregon Community Foundation  
Bruce and Brenda Burns  
Scott and Glenda Burns  
Conor and Tim Butkus  
Ellyn Bye  
Ramona and Bruce Cahn  
Ellen Cantwell  
Raegan Cardwell  
Christina and Michael Carl  
Pamela and Daniel Carl  
Matt Carlson  
Peggy Carstens  
Erin Cathcart<sup>o</sup>  
Janet Centrella  
Nancy Chafin  
Natasia and Tom Chan  
James Chassè  
Kelsey Chu  
Kathleen and Hugh Church  
Deysi Cisneros Maciel  
Melissa Clark and Ethan Anderson  
Valerie Cleary  
Matthew Cleinman  
Alana Cogen  
Arlene and Mitch Cogen  
Johanna Cogen  
Gina Condon and Eric Cress  
Tim and Deidre Conway  
Ginnie Cooper and Richard Bauman  
Alice Corbin  
Harriet Cormack  
Paul Curtin and Susan Smedema Curtin  
Sally Custer  
Siobhan Daly and Dan Summerfeldt  
Ilene and Jim Davidson  
Shannon Davidson  
Adam Davis and Hana Layson  
James Davis and Sally Loomis  
Scott Dawson\*  
Ashleigh de Villiers  
Benjamin DeJarnette

Pip Denhart  
Dev and Sumathi Devarajan  
George Devendorf and Susan Romanski  
Connie and Scott Devry  
Giovanna DiFalco  
Jess Dishman  
Kate Dixon  
Sue Dixon  
Troy and Donna Dockins  
Taizoon and Munira Doctor  
Laura and Michael Donaghu  
Taylor Donnelly  
Heather Dorsey  
Sarah Dougher  
Gail and Dan Dougherty  
Elisa Dozono and Tom Turner  
Christy Duncan  
Gloria and David Dunlap  
Shari Dunlop  
Ram Rey Duran  
Nancy and John Durkin  
Ken Eagon and Heather Burns Eagon  
Kristen Eberlin and Evan Bowers  
Ann and Ken Edwards  
Rachel Egan  
Andrew and Laurie Ekman  
Nicole<sup>o</sup> and Nicholas Elgin  
Micah and Audrey Engle-Eshleman  
Karen Erde  
Lainie and Steve Ettinger  
Les and Nancy Fahey  
Megan Fairbank  
Briana Falduti  
Neil Falk  
Steve Fallon  
Maureen Fallt  
Abby and David Farber  
Topaz Faulkner and Larry Conrad  
Richard and Ruthellen Fein  
Perry and Elise Fellman  
Nancy and Peter Ffitch  
Carolyn Fine  
Jonathan Fine  
Linda Fisher  
Nate Fisher  
Christina Flaxel  
Yasmine Flodin-Ali  
John-Patrick Fogarty  
Karen and Arthur Fong  
Callie Forrest<sup>o</sup>  
Gabrielle Foulkes  
Stephanie Fowler and Irving Levin  
Haley and Gabe Fox  
Griffin Fraser  
Bonnie Frederick  
Ann French  
Kate and Chad Freund  
Elaine and Robert Friedman  
Will Fruhwirth<sup>o</sup>  
Joanne and Paul Fuller

**KEY:** \*National or Local Board Member    <sup>o</sup>Current Student or Program Alumni  
    <sup>o</sup> Ambassador Board Member, Investment Committee

## OREGON

Jay Furey	James and Shirley Rippey Family Foundation	Diane Loux	Taryn Nobil
Scott Fuson	Becca and Michael James	Angela and Leroy Lucero	Susan Nunnery
Elizabeth Gabriel	Jon Jaqua and Kimberly Cooper	Joyce Lui <sup>0</sup>	Larry and Caron Ogg
Susan and Seth Garber	Rose Jay	Michelle Lung	Maureen O'Hagan
Ann Garcia	Janet and John Jay	Frances Lynch	Margaret Olney and Steve Marsh
Carthel-Garrett Family	Barbara Jennings and Richard Teutsch Fund	Marvin Lynn	Patricia O'Shea
Suzanne Geary	Erin Jensen	Jennifer Mabry	Ken Ostrin
Fatuma Gedi <sup>0</sup>	Troy Jesse	Katrina Machorro <sup>0</sup>	Wade Owens and Lauren Turner
Niyat Gegzhahber	David Johnson	Phyllis and Walter Malzahn	Eric Park
Erna Gelles	Jennelle Johnson	Charitable Trust	Dana and Erich Patterson
Dawn <sup>0</sup> and Daniel Geoppinger	Ned Johnson	Julie Mancini and Dennis Bromka	Kali Pauling and Paulina Apone
Nick Gideonse	Robin Johnson	Mohsen and Ariana Manesh	Lisa Pellegrino and Jeff Cogen
Carole Gilbertson	Annie and Conor Jones	Rosemarie Mannino and Daniel Carl	Ted and Adele Pelletier
Carolyn Gillen	Brice Jones	Dawn Marie Marshall	Stephen Percy
Matt Giraud	Camden Jones	Sheila Martin	Andrea Perez Garcia
Suzanne Goddyn	Kristin Mihalko	Violeta Martin	John Perkins
Erica Goldman	Sandra and John Joos	Leslie <sup>0</sup> and Albert Martinez	Robert and Rhonda Perkins
Harold Goldstein	Dolores and David Judkins	Troy and Michelle Martinez	Mark and Judy Peterman
Nicole Goltz	Mimi and Stephen Kafoury	Marina and Ben	Sandra Peters
Steve and Stephanie Gotsch	Lisa and Jessica Kahlman	Martinez-Bateman	Loretta Pickerell and Larry Edelman
George Granger*	Ryminhild Kaio	Sarah Mathenia*	Regina Pieracci
Susan Grayston-Miller	Korina Kaio-Maddox <sup>0</sup> and Dane Jacobson	Stuart Mathews	Alan and Sherri Platt
Sharon Grayzel and Jeff Dodson	Roberta and Steve Kaio-Maddox	Kara Maurer	Emanuela Plesa
Pamela Greaney	Jennifer Kalez	Nicole Mays	Maureen Porter
Adam Green	Merilee and Dave Karr	Sarah Mignon Mazique and James Rue	Amy Powell
Emily and David Groth	Zoe Kaslow	Gwyneth McAlpine and Michael Robertson	Michael and Alice Powell
Vicki Guinn	Alycia Kearns	Leslie McBride	Naomi and Steve Price
Margarita Gutierrez Lemus	Anthony Kell	Emily McCaffrey <sup>0</sup> and Chris Wright	Savannah Rae
Don Haaga	Marilyn Keller	Holly McCall	Agata Ramallo Garcia* and Erik Stromquist
Clark Haass* and Kate DiSalle	Tim Kelly	Alice McCartor*	Abbie Rankin and Scott Witscher
Jeffrey Haass	David Kennedy	Rebecca and Logan McClain	Vivian Rappleyea
Betsy and Joe Hackney	Julia Kim	Katherine and Ken McDowell	Ken Ratterree
Kendal Hansen	Kandace King	Sue and Doug McLeod	Ms. Claire Reade and Dr. Earl Steinberg
Anna Hare	Fran Kinkad	Melissa and Jeffrey McVeigh	Andrea Reed and Genaro Peredia
John Harland and Janet Hoffman	Heidi Klausner	Richard Meeker and Ellen Rosenblum	Leanos
Pat and Kelley Harrington	Edward and Christie Kline	Beth and Andrew Melville	David and Sharon Reese
Mick Harris <sup>0</sup>	Morley and Jim Knoll	Kirsten and Richard Meneghello	Bobbie Regan and Barrett Stambler
Elizabeth and William Hathaway	Sarah Knudsen	Lora and Jim Meyer	Ellen and Jim Reuler
Dawn Hayami	Patricia Koehler and Kathleen Krider	Amber Milavec	Sally Rhys
Ruth Headley	Maura Koehler-Hanlon and Brendan Pierpont	Clyde Miller	Mark Richardson and Janet Goldsmith
Michelle Hecht	Kevin and Diane Kono	Suzanne Miller and Chip Greendale	Erik Richmond and Annette Demsey Family Fund of the Oregon Jewish Community Foundation
Carole and Brad Hedstrom	Helen Young Kouba and Rod Kouba	Donna Milrany	Jill Rissi
Elena Hein	Gesine Kratzner	Alison Mitchell	Emily Ritchie
James and Tina Hein	Brenda and Yi-Jau Ku	Margie Mitchell	Benjamin Robinson
Sarah Hench	William H. Kwitman and Monica Moriarty	Ronald Mitchell	Kamesha Robinson
Michele and Jerry Hendricks	Kali Thorne Ladd	Mary and Chris Moller	Stephen and Kate Robinson
Tracey Henkels	Randall and Amy Lahrman	Susan Monti	Cherri Roden
Samuel and Ana Maria Henry	Lea Lawrence-Mosio	Malinda and Doug Moore	Ninfa Rodriguez
William and Anna Herbert	Jackie Leach	Seth Moran	Charese Rohny* and Johah Edelman
Christine Hermann	Jeffrey Lee	Kari and Matthew Morrison	Terence Rokop
Kathleen Higbee	Tony and Heidi Leineweber	Michael and Ruth Morrow	Brian Roper
Lisa Hill	Todd and Yuke Lemoine	Carole Morse	Carla Rose Allen
David and Marguerite Hills	Jose Lemus	Melanie and Efrain Musial	Maddy Rose
Gregory and Mary Hinckley	Joseph C. Leonardo & Co. Charitable Foundation	Catherine and Mark Myers	Terri Rottman
Fred Trullinger	Megan and Brian Levine	Darshana Nair	Thomas Ruks
Mark Holloway	Beth Lewis	James Narr and Kristin Zinsmaster	Linda Ruswinkle
John and Laura Holzwarth	Wendy Lichtenbaum	Alex Nelson	Carol Saleta
Marilynn Honeycutt	Susan Lienhart and Noel Holley	Kimberley Neroda	Graham Salisbury Family Educational Fund of Oregon Community Foundation
Anne Hoot*	Sung Lim*	Torey Neumann	Catherine Samson
Alyson Horan	Ruth Linehan	Neumeier Taylor Foundation Fund	Steve Samuelson
Lindsey Horenblas and Geri Cullers	Caitlin and Steven Lodzinski	Andrew Nguy <sup>0</sup>	Andrea Sardella
Nancy and Brad Horton	Michael Long and Jessica Nischik Long	Tom* and Jill Nilan	Matthew Schacht
Sheryl Horwitz and Larry Knudsen	Jon Loomis <sup>0</sup>	Emielle and Nick Nischik	Susan and John Schilke
Jason and Janell Hosch	Reese Lord and Jennifer Marfori	Julie and Monika Nischik	
Cynthia Hswe and Neil Riordan	Una Loughran	Lydia Nischik	
Angela Hult		Stephanie and Herb Nischik	
Thomas Huminski			
Jane and David Huntington			
Lyde Hussey			
Rosemary Hutchinson			
Carol and Nitu Iyer			
Michelle and Frank Jackson			

**KEY:** \*National or Local Board Member    <sup>0</sup>Current Student or Program Alumni  
<sup>0</sup> Ambassador Board Member, Investment Committee

## OREGON

Jim and Jan Schlachter  
Mark and Patti Schlesinger  
Liz Schlosser  
Ashley Schmidt  
Kelly Schmidt  
Kincaid Schmitz  
Jennifer Schuberth<sup>0</sup> and John Urang  
Maureen Schuberth  
Sue and Rick Scott  
Mairi Scott-Aguirre  
Reed Scott-Schwalbach and Chris Celauro  
Minda and Bob Seibert  
Kate Shaikh  
Charlie Shapiro  
Natasha\* and Geoffrey Shauger  
Hilary Shohoney  
Todd Signe  
Ana Lee Silva-Gburek  
Stefanie Silverman  
Emily Silvey  
Shalanda Sims  
Jus Singh  
Trace and Lisa Skopil  
Allison and Andrew Smith  
Carole Smith  
Kelly Smith  
Shauna Smith  
Joseph Smurdon  
Jeremy<sup>0</sup> and Emily Snyder  
Vincent and Sharon So  
Amy Solana and Dave Trost  
Richard Solomon and Alyce Flitcraft  
Candy and Tom Spangler  
Ann Spataro  
Alice Spitz  
Isabel Staccuneddu  
Karen and Nicholas Starin  
Kelly Starkey  
Geneva<sup>0</sup> and Darin Stegemoller  
Katie and Alex Stengel  
Jeff Stephens  
Kathleen Stephenson-Kuhn  
Stapp Family Trust  
Laura Stepp  
Lexi Stern and Holly Duthie  
Sam and Nora Stevens  
Stewart Family Fund of the Oregon Community Foundation  
Jennifer and Darin Stoller  
Jennifer Stoltenberg  
Kristina Storic  
Linda and Dennis Stovall  
Gwenn and Lance Stover  
Mackenzie Streissguth<sup>0</sup>  
Dawn-Hunter Strobel  
Kari Strong and Trina Ramirez  
Anne-Marie Summerhays and Michael Kennan  
Merris Sumrall  
Raluca Sustarich  
Mary Swartz  
Rowan Tanner  
Jeri and Jon Taylor  
Thoresz Family Fund of The Oregon Community Foundation  
Cholee Thompson  
Curtis Thompson

Kristin and Richard Thompson  
Lauren Thompson  
Marta and Ken Thrasher\*  
Karen Tingey and Jeff Hopper  
Jillian and Nathaniel Toda-Currie  
Duy Tran and Jessica Quarles  
Amy Trieu\*  
Susan Tripp  
Abigail Tupa  
Matthew and Becky Tusk  
William Uicker and Rejina Injety  
Ronald and Wendy Ulrich  
James Veber  
Hans-Michael Vermeersch and Rob Krum  
Christine and David Vernier  
Alyssa Vitale<sup>0</sup>  
John Vitale  
Jane Vogel Mantiri  
Stephanie and John Volkman  
Melisa Vuong<sup>0</sup>  
Teri and John Wadsworth  
Wendy Walcoff  
William and Leslie Waldman  
Darby Walker  
Jill Ward  
Kimberley and Michael Warnecke  
R and D Warner Fund  
Emily and Michael Watson  
Dr. Barbara Wayson and Dr. Michael Wyman  
Brian and Nikki Weaver  
Michael Weaver  
Emily Weber  
Katrina Weibel  
Lawrence Weisberg  
Brianna Wellen  
Erin and Ronald Werner  
Caroline Westley  
Dan Wieden and Priscilla Bernard Wieden  
Amy Williams  
Patrick and Lisa Williams  
Rory and Mark Williamson  
Pamela Wilson  
Jennifer Winquist  
Amy and Jesse Winterowd  
Asia<sup>0</sup> and Remy Wisecarver  
Madeline Witwer-Dukes  
Susan Wladaver-Morgan and David Morgan  
Erin Wolf  
Jo Wolf  
Kate and Matthew Wolpert  
Athol Wong  
Bevin Wong and Mark Jones  
Carolyn Wood  
Jeana Woolley  
Jeffrey Work  
John and Alison Worthington  
Sandy Wright  
Eric Wrona  
Duncan and Aileen Wyse  
Rachel Yabkowitz and Suzanne Suchard  
Janice Yang  
William and JoAnn Yates  
Candace Young, Ph.D.  
Kathleen and David Young

Simbiat Yusuff<sup>0</sup>  
Karma Rose and Jacob Zavita  
Louise Zemina  
Xin Zhang

### GIFTS IN TRIBUTE

In honor of Ally  
In honor of Sona Andrews  
In honor of Mary Bierwirth  
In honor of Jon Boeckenstedt  
In honor of Charles and Beth Brod  
In honor of James Chasse Jr  
In honor of Jennifer Clarke  
In honor of Johanna Cogen  
In honor of CP Madison Class of 2017  
In honor of Scott Dawson  
In honor of Bobbi Donaghu  
In honor of Erin and Sean Gallivan  
In honor of Megan Harvey  
In honor of Elena Hein  
In honor of Devin Hendricks  
In honor of Marilynn Honeycutt  
In honor of Nick Johnson and Richard Meeker  
In honor of Korina Kaio-Maddox  
In honor of Katrina Machorro  
In honor of Julie Mancini  
In honor of Alice McCartor  
In honor of Jim McCorkell  
In honor of Dan and Kathy Mertens  
In honor of Dr. Roger Meyer  
In honor of Ben Morris  
In honor of Emielle Nischik  
In honor of Peter Nordbye  
In honor of Sarah and Kat  
In honor of Sandie Peters  
In honor of Jacob Pelletier  
In honor of Michael Stuart Owen  
In honor of Ken and Marth Thrasher  
In honor of Dick Thompson  
In honor of Trivia Night  
In honor of Christina and Tim Wata  
In honor of Wolf sisters  
In honor of Arin Young  
In honor of Emanuel Zinsmaster  
In memory of Mary Berkeley  
In memory of Troy and Baden Biddle  
In memory of Pamela Chasse  
In memory of Bertha Furey  
In memory of Michael Lung  
In memory of Cindy Moore  
In memory of Bruce Nawrocki  
In memory of Mike Owens  
In memory of Savannah Rae  
In memory of Roxy and Jasper - beloved pets  
In memory of C. Robert Ryono  
In memory of Jay Sappington

### MATCHING GIFT COMPANIES

Apple  
Cambia Health Solutions  
Delta Dental of Oregon & Alaska  
GitHub

Intel Corporation  
Jones Lang LaSalle  
M Financial Group  
Moda Health  
Nike, Inc.  
Oracle Corporation  
PGE Foundation  
The Standard Charitable Foundation  
U.S. Bank Foundation  
Xerox Corporation

### IN-KIND SUPPORTERS

Baseballism  
Breakside Brewing  
Case Study Coffee Roasters  
Dead Stock Coffee  
Free Geek  
JE Dunn Construction  
Kann Winter Village  
Migration Brewing  
Moda Health  
Portland Business Alliance  
Portland Gear  
Portland Playhouse  
Seven Bridges Winery  
Stoller Wine Group  
Target - Beaverton  
Target - Fairview  
Target - Mall 205  
Target - Portland NW  
The Partners Group  
Tonkon Torp

### SCHOOL AND COMMUNITY PARTNERS

All Hands Raised  
Beaverton School District  
- Aloha High School  
Centennial School District  
- Centennial High School  
Clatskanie Middle & High School  
CORCAP  
David Douglas School District  
- David Douglas High School  
Gaston Union Jr/Sr High School  
George Fox University  
Gresham-Barlow School District  
- Gresham High School  
Irrigon Jr/Sr High School  
Lewis and Clark College  
Linfield College  
McLoughlin High School  
Mt. Hood Community College  
Oregon State University  
Pacific University  
Parkrose High School  
Portland Community College  
Portland Public Schools  
- Madison High School  
Rainier Jr/Sr High School  
Reynolds School District  
- Reynolds High School  
Riverside Jr/Sr High School  
St. Helens High School  
University of Oregon  
University of Portland  
Warner Pacific College  
Western Oregon University  
Willamette University

# Thank you!

**KEY:** \*National or Local Board Member    <sup>0</sup>Current Student or Program Alumni  
<sup>0</sup> Ambassador Board Member, Investment Committee





**COLLEGE  
POSSIBLE™**

# Philadelphia Donors and Partners Fiscal Year 2021

Twelve months ended June 30, 2021

## MULTI-YEAR LEADERSHIP GIFTS

### The Ralph L. Hose Revocable Trust

\$1,537,313.20 over 3 years

### The Bernstein Family

\$250,000 over 3 years

### Raymond James

\$150,000 over 3 years

### The Foundation for Delaware County

\$70,000 over 2 years

### The Grace S. and W. Linton Nelson Foundation

\$25,000 over 2 years

## CORPORATE, FOUNDATION AND GOVERNMENT FUNDERS

The Allen Hilles Fund  
The Anne M. and Philip H. Glatfelter, III Family Foundation  
AT&T Services Inc.  
Bosco's Department Store, LLC  
The Christopher Ludwick Foundation  
Citizens Bank  
The Community's Foundation  
Dolfinger-McMahon Foundation  
The Dow Chemical Company  
EisnerAmper, LLP  
The Essential Foundation  
The Foundation for Delaware County  
Frank DiCicco Associates, LLC  
The FS Foundation Inc.  
Gerolamo McNulty Divis & Lewbart, P.C.  
The Grace S. and W. Linton Nelson Foundation  
The Hamilton Family Charitable Trust  
Henrietta Tower Wurts Memorial  
Howell Lockhart Seiple Trust  
ImageFIRST Uniform Rental Services, Inc.  
Jacobson Strategic Communications  
The Lawrence Saunders Fund  
Christian R. and Mary F. Lindback Foundation  
M&T Charitable Foundation (M&T Bank)  
NRG  
Philadelphia 76ers

Philadelphia Eagles Foundation  
The Philadelphia Foundation  
Philadelphia Insurance Companies  
PJM Interconnection LLC  
Raymond James  
Riley Riper Hollin & Colagrecio  
Sam's Club #6332  
The Sun East Charitable Foundation  
Target Foundation  
The McLean Contributionship  
UBS Community Affairs  
Wexford Science and Technology  
Wipfli LLP

## INDIVIDUAL AND FAMILY FOUNDATIONS

Anonymous (2)  
Rosie Adams  
Gboyega Adeboyeje  
Barbara Andrew  
M. Anthony Barrett\*  
Cassandra\* and Rasaan Bell  
The Bernstein Family\*  
Jeffrey Bodle  
David Brown  
Stephanie Brown  
Eric Bryant\*  
Alexis Buck  
Susan Buehler\* and Greg Saul  
Joanne Calabria  
Richard G. Clemens  
Danielle Cohn  
Dr. William Cowen  
Barbara Craig and Matthew Kremer  
Khadijah Diggs  
Amanda DiPaolo  
Dan Divis  
Joseph\* and Doreen Divis  
Idette Elizondo  
Arthur Ellis  
Margaret Emerson  
Catherine Engel Menendez  
Harold Epps  
Joel\* and Liz Feldman  
Sharla Feldscher  
Adam Fernandez  
Michael Ferrier  
John Fisher  
Matthew Fisher  
Alison Foster  
Richard Greenwald  
Matthew Harper  
Judith Himes  
Gloria Hochman

Robert Holloway  
Greg Holman  
The Ralph L. Hose Revocable Trust  
Stephanie Humphrey  
Abby Jennis  
Daniel Jones  
Keisha Jordan  
Jeff Jubelirer  
Kathleen King  
Jessica Kowalczyk  
Sarah Libros  
Tracey Lopolito and Chris Schubert  
Ralph and Maryanne McDevitt  
Dave McGinley  
McKenna Family Charitable Trust  
Tracy McMillan  
Guy Mills  
Rhonda Mims  
Precious Mines  
Laverne Mooty  
Stephen and Janet Mullin  
Norman Nelson  
Tytton Partners  
Melissa Nichols  
Kim Olthoff and David VanHouten  
Jessica O'Neill  
Tom O'Neill  
Danielle Page  
Laura Perna  
Dr. Dia Pflieger  
Joanna Ramirez  
Louis and Nancy Rappaport  
Ian Reitz  
Sylvia Rivera\*  
Bill and Sheila Roberts  
Linda and Kenneth Romanowski  
Lawrence Rubin  
Mr. and Mrs. Edward T. Ruddock  
Marc Rudolfker  
Mandy Santiago  
Dave C Schrader\*  
The Marcee Harris Schwartz and Jon Schwartz Philanthropic  
Fund of the Jewish Community  
Foundation of the Minneapolis Jewish Federation  
Lisa Simon  
Mark Tarasiewicz  
Robert and Marlyn Vogel  
Brian Walsh, Jr.\*  
Laura Weiner  
Meg Wherrity  
Dia Williams Adams  
Nina G Zucker

## GIFTS IN TRIBUTE

In honor of Judith Himes  
In honor of PPRA 75th Anniversary  
In honor of Becky Sokolow  
In memory of Ralph Hose  
In memory of Carol Mims-Williams

## MATCHING GIFT COMPANIES

The Clorox Company  
NRG  
PJM Interconnection LLC  
Walton Enterprises

## IN-KIND SUPPORTERS

Joel\* and Liz Feldman

## SCHOOL AND COMMUNITY PARTNERS

### High School Partners

The Academy of Palumbo  
George Washington High School  
Murrell Dobbins CTE High School  
Jules E. Mastbaum High School  
Penn Wood High School  
Upper Darby High School

### University Partners

Cabrini University  
Chestnut Hill College  
Cheyney University  
Haverford College  
Indiana University of Pennsylvania  
Kutztown University  
Lincoln University  
Lock Haven University  
Manor College  
Millersville University  
Neumann University  
New York University  
Penn State University  
Shippensburg University  
Temple University  
West Chester University

### Community Partners

College and Career Readiness, The Office of Postsecondary Readiness, The School District of Philadelphia  
Main Line Art Center  
Main Line Chamber of Commerce  
The Philadelphia 76ers  
Philadelphia College Prep Roundtable  
The University of Pennsylvania

# Thank you!

**KEY:** \*National or Local Board Member



**COLLEGE  
POSSIBLE™**

# Washington Donors and Partners Fiscal Year 2021

Twelve months ended June 30, 2021

## MULTI-YEAR LEADERSHIP GIFTS

### Ballmer Group

\$450,000 over 3 years

### Satterberg Foundation

\$300,000 over 3 years

### The Bontje Family Charitable Fund\*

\$300,000 over 3 years

### Lewis Levin and Emmy Neilson

\$270,000 over 3 years

### Sheng-Yen Lu Foundation

\$105,000 over 3 years

### BECU

\$100,000 over 2 years

### Silver Family Foundation

\$100,000 over 2 years

## CORPORATE, FOUNDATION AND GOVERNMENT FUNDERS

Alaska Airlines Foundation  
Ballmer Group  
BECU  
The Beim Foundation  
Chegg, Inc.  
Chime Inc  
The Clarius Group, LLC  
Costco Wholesale  
Elizabeth A. Lynn Foundation  
The Glaser Foundation  
The Kaphan Foundation  
King County Employee Giving Program  
The Kroger Company  
Medina Foundation  
The Norcliffe Foundation  
RealNetworks Foundation  
Satterberg Foundation  
School's Out Washington  
Seattle Foundation  
Serve Washington  
Sheng-Yen Lu Foundation  
Silver Family Foundation  
Teel Charitable Foundation  
Tulalip Tribes Charitable Contributions  
U.S. Bank Foundation  
Umpqua Bank Charitable Foundation

## INDIVIDUAL AND FAMILY FOUNDATIONS

Anonymous (10)  
Noriko Arnstein  
Leah Atkinson and Jan Bilinski  
Cara Bailey and Gary Owen  
Harriet Bakken  
Douglas and Maria Bayer Foundation  
Clara Berg  
Bonnie Berk\* and Larry Kessler  
Teresa Bigelow and Eric Larson  
Matthew Boerger  
The Bontje Family Charitable Fund\*  
Bradley Brickman  
Linda and Steve Brown  
Shelly Sundberg  
Bruce Burger  
Sally Burkhart and Hugh Rubin  
Bruce and Debra Cady  
Amelia Canaday  
Ellen Canaday  
Margaret Cary  
Megan and John Collier  
Austin Dahl\* and Pamela Kraus  
Philip and Cathy Davis  
Gail DeGiulio  
Manmeet Dhami\*  
Sally and Mark Ditzler  
Gloria Dixon\*  
Jennifer, Ken and Makena Easley  
William and Lee Ellis  
Kathryn Flores  
Michael J. Fox and Kerry Radcliffe  
Lisa Garcia-Hanson  
Christopher Goelz and Joanne S. Abelson  
Lynn Goldstein and David Tauben  
Jika Gqiba-Knight  
David Grossman  
Matt Grudis  
Kendall Guthrie\* and Eric Honea  
Jane Hadley and Randy Robinson  
Abigail Halperin and Christian Swenson  
Linda\* and Craig Hendrickson  
Daniel J. Herman and Diana K. Frawley  
Betsy\* and Stan Herring  
Kelly Herrington\*

Robert Hilton  
Andrew Hogan  
Ashley Hulsey and Marc Kittner  
Jo Jackson  
Johnston and Ward Family Charitable Fund  
Jonathan and Mary Kauffman  
Joel Kaufman and Anna Wald  
Jennifer and Steven Kern  
Michael King  
Penelope A. Law  
William Le Mire and Corinne Gooden  
Lewis Levin and Emmy Neilson  
Kathleen and Jeffrey Lindenbaum  
David Lion  
Erica Lock and Shel Kaphan  
Bladin and Lou Family Advised Fund at Seattle Foundation  
Wei Low  
Theresa Mannix and Caleb Canby  
Judy Margrath\*  
Josh May  
Sarah Meeker and Kirk McKinley  
Victoria Millard and David Avery  
Bernard Minsk Estate  
Tejas Mistry  
Bill and Tese Neighbor  
Emily Nordhoff  
L. Darrell Powell\* and Yvonne Terrell-Powell  
Derek Rodrigues and Larisa Kaukonen  
Bill Rumpf and Eve Rumpf-Sternberg  
Susan and Alan Schulkin  
P.A. and W.E. Shaver  
Audrey and John Sheffield  
John and Alexandra Shewchuk  
Jennifer Sik  
Nate Simpson  
Jane Sisk  
Liisa Spink  
Martha Straley and Ken Mostow  
Shelly Sundberg and Whit Alexander  
Brad Thomas  
David Thompson and Ingrid Holmlund  
Guadalupe Torres

Harry Townsend  
Washington State Combined Fund Drive  
Sherri Wolson and Neil Black Charitable Fund at Seattle Foundation  
Kathryn Yates and Gary Stevenson  
Abel Ykalo  
Verona H Young

## GIFTS IN TRIBUTE

In honor of Norm and Lisa Bontje  
In honor of Amelia Canaday  
In honor of Guadalupe Torres  
In memory of Joshua Wald  
In memory of Todd L. Hawkins  
In memory of Jose Gallardo Diaz

## MATCHING GIFT COMPANIES

BECU  
The Bill & Melinda Gates Foundation  
Microsoft Matching Gifts Program

## SCHOOL AND COMMUNITY PARTNERS

**Seattle Public Schools:**  
Chief Sealth International High School  
Franklin High School  
Garfield High School  
Nathan Hale High School  
West Seattle High School

**Federal Way Public Schools**  
Decatur High School  
Todd Beamer High School

**Renton School District**  
Hazen High School  
Lindbergh High School

**Colleges**  
Seattle Central College  
University of Washington Bothell

# Thank you!

**KEY:** \*National or Local Board Member