



CORE PROGRAM OVERVIEW

College opportunity for all



COLLEGE
POSSIBLE™
WASHINGTON



The growing college degree divide

A student’s future should be determined solely by their aspirations, motivation and effort, not by their family’s income

Yet nationwide, there’s a widening gap between the aspirations of students from under-represented communities who want to earn a college degree and the systemic, unfair barriers they face in achieving it. Within Washington four-year institutions, students from low-income backgrounds graduate 15% behind their higher-income peers.¹

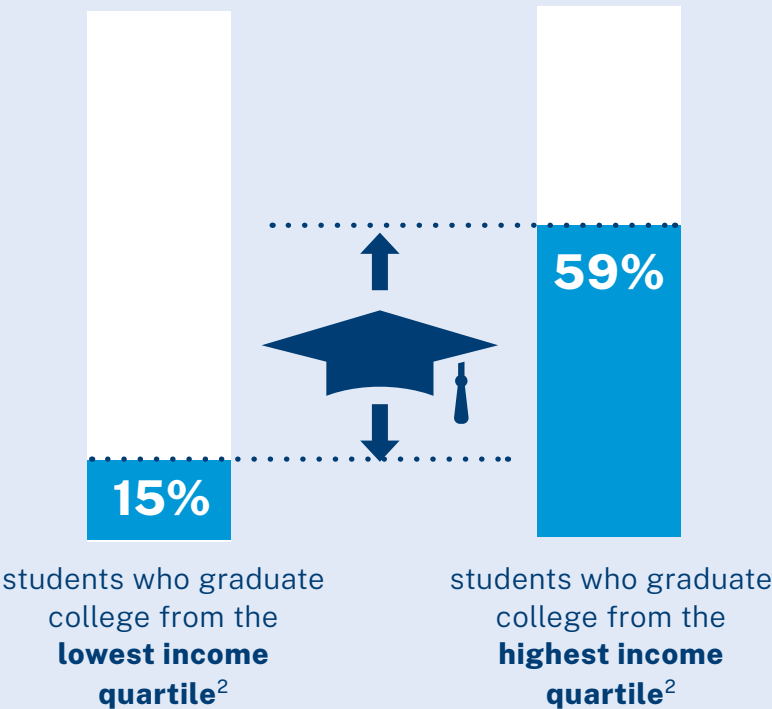
While there is no single cause, contributors to this “degree divide” include inequitable academic prep, fragmented resources, complex college systems and resource-constrained staff. Early evidence indicates that the COVID-19 pandemic has widened these barriers, putting the diversity of our future workforce and equitable economic mobility at continued risk.

¹ <https://wsac.wa.gov/sites/default/files/2020-10-20-Report-Equity-Landscape.pdf>
² Pew Research Center analysis of 1996 and 2016 National Postsecondary Student Aid Study (NPSAAS), National Center for Education Statistics, “A Rising Share of Undergraduates Are From Poor Families, Especially at Less Selective Colleges.”
³ Pell Institute, “Indicators of Higher Education Equity in the United States: 2022 Historical Trend Report,” page 292.

THE COLLEGE DEGREE DIVIDE

The number of college students who live in poverty or who are nonwhite has increased.¹

Unfortunately, too many of them are still being left behind as they graduate college at rates far lower than their higher-income peers.²



THOSE WITH
A COLLEGE
DEGREE ARE:



3.5x less likely
to live in poverty³



24% more likely
to be employed⁴



And earn upward of
\$1.2M more
in their lifetime⁵

Strong communities start with college equity

When students from under-represented communities earn a bachelor's degree, especially those who are the first in their family to attend college, they are 24% *more likely* to be employed and 3.5 times *less likely* to live in poverty when compared with peers who don't attend college.³ Evidence shows that college graduates earn upward of \$1.2 million more in their lifetime, and have higher rates of civic engagement than their high school graduate peers.⁵ In Washington, 80% of those who earn \$100k or more have a post secondary degree.⁶

Evidence also shows that removing barriers to college access and success can create a more diverse and richer educational experience on college campuses. Removing these barriers also contributes to building a more diverse workforce, a critical factor in fueling greater innovation, stronger communities, and more equitable economic mobility.

³ "It's Not Just the Money: The Benefits of College Education to Individuals and to Society," 2015. <https://www.luminafoundation.org/resource/its-not-just-the-money/>

⁴ U.S. Bureau of Labor Statistics, 2019. <https://www.bls.gov/opub/ted/2019/44-6-percent-of-high-school-dropouts-and-72-3-percent-of-college-graduates-employed-in-august-2019.htm>

⁵ Lumina Foundation, "Stronger Nation Report," 2015. <https://www.luminafoundation.org/news-and-views/stronger-nation-2015/>

⁶ 2020 Equity Landscape Report: Exploring Equity Gaps in Washington Postsecondary Education. <https://wsac.wa.gov/sites/default/files/2020-10-20-Report-Equity-Landscape.pdf>



"For me, earning a college degree means more freedom to do what I want, new opportunities, and carving new paths for future generations of my family."

Kim,
University of Washington - Seattle





We empower the college dream

At College Possible Washington (previously known as College Access Now or CAN), we’re working to close the college degree divide. Since 2006, our college access and success programs have helped put more than 4,600* students from under-represented communities in Seattle and South King County on the path to a college degree. Our pioneering model matches eligible students with near-peer coaches and an intensive curriculum designed to help them overcome the most common barriers to getting into college and completing their degree—all at no cost to students or their families.

Through our partnerships with three area school districts, we are advancing college equity for the greater Seattle community. Our aim is to help create a more educated and diverse workforce by offering young people real opportunities to break the cycle of poverty.

* Fiscal year 2021

WHAT SETS US APART:



Near-Peer Coaches

Students benefit from the relatability, recent experience and trusted relationship with our near-peer coaches who offer an intensive curriculum of personalized interventions.



6+ Years of Support

Students enrolled in our Core Program receive one of the longest support cycles available, starting their junior year in high school and continuing through degree completion.



Support for Unenrolled Students

Students who unenroll or stop out of college continue to receive coaching support to help them get back on track toward their college degree goal.



Free to Students

Thanks to the generous support of our funders and partners, our college access and success programs are offered at no cost to students or their families.



AmeriCorps

A PROUD AMERICORPS PROGRAM

AmeriCorps is a federal agency that brings people together to tackle the country’s most pressing challenges through national service. Our AmeriCorps members commit to a year of service as College Possible coaches in communities throughout the country. Many represent the identities of the students they serve, and each brings a commitment to social justice and closing the college equity divide.

College access and success programs offered in Washington



Core Program

Our most comprehensive college access and success program. Eligible students receive up to six years of near-peer coaching support to navigate and overcome the most common barriers to getting into and through college.



Connects

Customized partnerships that support the college recruitment, enrollment, persistence and retention of College Possible students on partner institutions' campuses.



“College Possible’s ... unique coaching model ensures that underrepresented student populations get the necessary support to make good college decisions, enroll, and ultimately navigate the complexities of college life.

Over the 10 years of partnership, thousands of Franklin High School student lives have been positively impacted.”

Andrew O’Connell,
Principal, Franklin High School

Over 20 years of national, evidence-based results

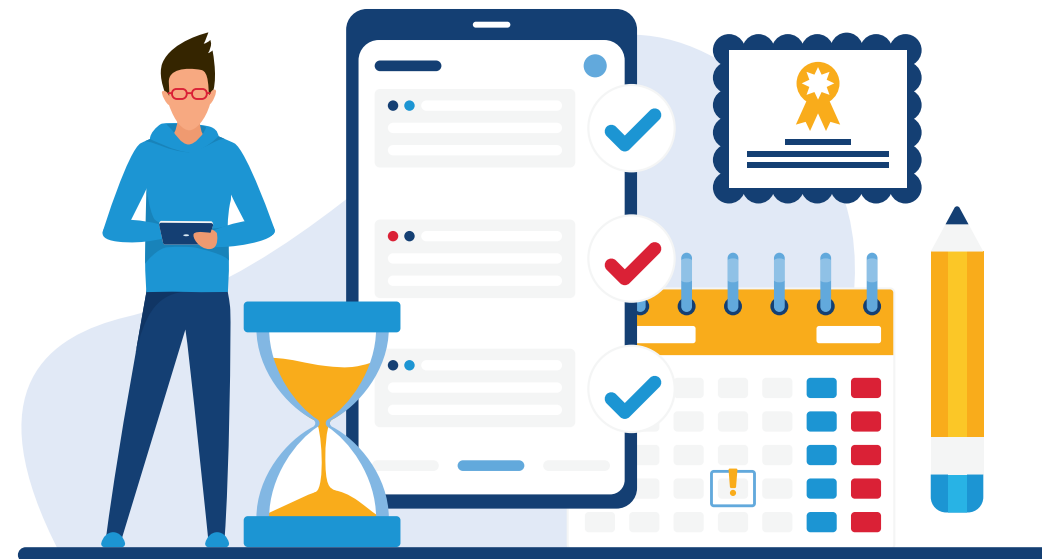
As one of the largest college access and success organizations in the country, our evidence-based programs have earned national credibility. Compared with their peers from similar backgrounds, College Possible students are **30% more likely** to enroll in college the year after high school graduation, and **three times more likely** to earn a bachelor's degree after graduating from high school.⁷

30%

more likely to enroll in college the year after high school graduation

3x

more likely to earn a bachelor's degree after graduating high school



⁷ The Pell Institute for the Study of Opportunity in Higher Education. Indicators of Higher Education Equity in the United States. p 121. 2019. http://pellinstitute.org/indicators/reports_2019.shtml

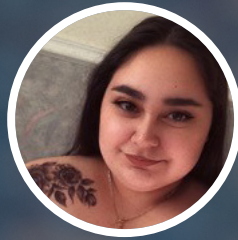


“My College Possible coach has supported me through valuable check-ins. Additionally, they were on top of deadlines like class registration and finals.

During a time when I was missing the incredibly important support of an adult mentor, College Possible provided that for me and I am so thankful.”

Gustavo,
Garfield High School





“I am a first-generation college student and the simple opportunity of being able to go to college means the most to me. If, and when, I earn my degree, I plan on using it to help my community as much as possible.”

Johana,
Tacoma Community College



“Back at Franklin High School, I really felt that my coaches were great at setting up a community for us as we prepared for college — all the late school evenings, open labs, icebreakers and deep talks with my coaches. The lunch hangouts and after-school sessions were something to look forward to.”

Josh,
Franklin High School,
University of Washington - Seattle



THE COLLEGE POSSIBLE STUDENT JOURNEY

1 Explore and prepare

HIGH SCHOOL JUNIOR YEAR

- SAT prep
- College fit exploration
- Paying for college

2 Select, apply and finance

HIGH SCHOOL SENIOR YEAR

- Financial aid and scholarship applications
- College application and essay prep
- College visits and selection
- Plan for housing and transportation

3 Transition to college

SUMMER BRIDGE

- Class enrollment
- Transition to school

4 Persist through graduation

COLLEGE YEARS

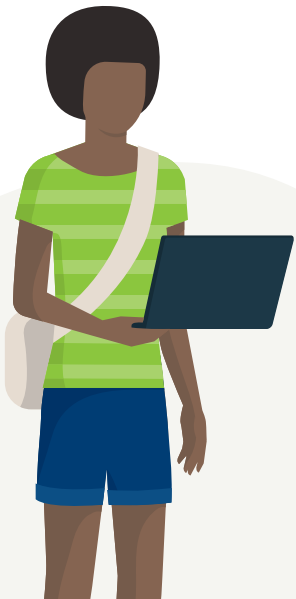
- Navigate complex college systems
- Access campus and community resources
- Form supportive peer and campus relationships
- Adjust to the rigors of the first year
- Stay on track academically
- Renew financial aid and scholarships
- Budget and manage time

5 Transition to career

GRADUATION

- Explore internships and jobs
- Resume and interview prep

Near-peer coaches provide proactive, personalized support to help students **navigate and break through the most common barriers** on their path to a college degree





Learn more or get involved

PARTNER

To explore how a College Possible Washington partnership can empower your students, contact our program team today at WAinfo@CollegePossible.org to schedule an informational meeting.

GIVE

Your financial support helps us continue to expand our coaching and support throughout Washington at no cost to enrolled students or their families. To make a donation, or to explore a broader funding partnership, visit CollegePossible.org/DonateWA.

SERVE

If you know a current college student or recent grad interested in making a meaningful difference in the lives of youth, encourage them to explore a life-changing year of service as a College Possible Washington AmeriCorps coach at CollegePossible.org/Serve.

APPLY

If you know an eligible student who dreams of attending college and would like free support to find their best-fit colleges, build strong college applications, finance their education, and persist through graduation, refer them to CollegePossible.org/Apply.



College Possible is proudly
supported by AmeriCorps

This material is based upon work supported by AmeriCorps grants. Opinions or points of view expressed in this document are those of the authors and do not necessarily reflect the official position of, or a position that is endorsed by, AmeriCorps.

CollegePossible.org/Washington