



CORE PROGRAM OVERVIEW

College opportunity for all



COLLEGE
POSSIBLE™
PHILADELPHIA



The growing college degree divide

A student's future should be determined solely by their aspirations, motivation and effort, not by their family's income

Yet across Philadelphia, there's a widening gap between the aspirations of students from disinvested communities who want to earn a college degree and their degree attainment, due to the systemic, unfair barriers they face. About one in every four Philadelphians live in poverty¹ and among Philadelphians age 25 or older, only 28% have a bachelor's degree — a rate lower than in many U.S. cities.²

While there is no single cause, contributors to this “degree divide” include inequitable academic prep; limited and fragmented resources; complex college systems; and resource-constrained staff. Early evidence indicates that the COVID-19 pandemic has widened these barriers, putting the diversity of our future workforce and equitable economic mobility at continued risk.

¹ PEW Charitable Trust, The State of Education in Philadelphia Report (2019)

² PEW Charitable Trust, The State of the City Report (April 2020)

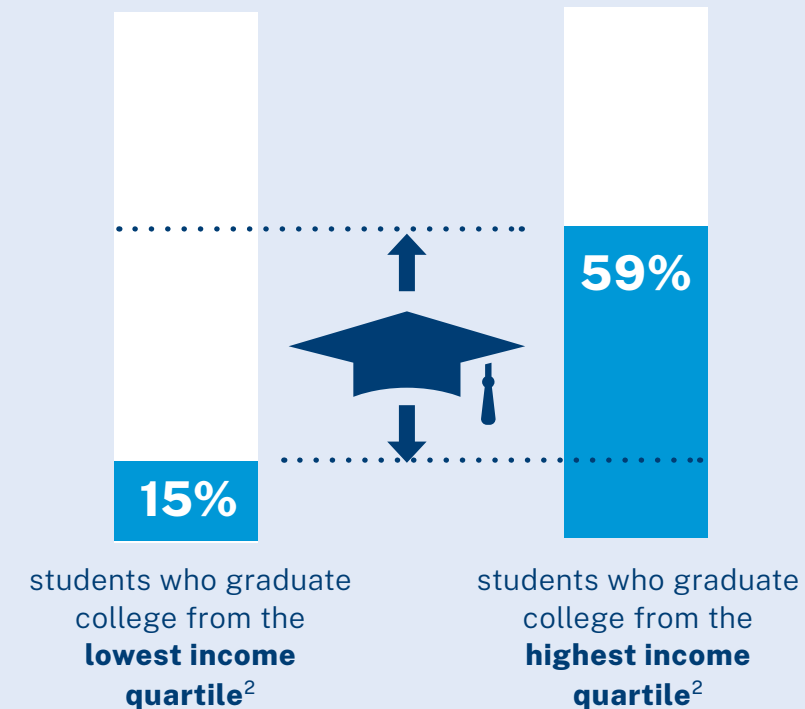
³ Pew Research Center analysis of 1996 and 2016 National Postsecondary Student Aid Study (NPSAAS), National Center for Education Statistics, “A Rising Share of Undergraduates Are From Poor Families, Especially at Less Selective Colleges.”

⁴ Pell Institute, “Indicators of Higher Education Equity in the United States: 2022 Historical Trend Report,” page 292.

THE COLLEGE DEGREE DIVIDE

The number of college students who live in poverty or who are nonwhite has increased.¹

Unfortunately, too many of them are still being left behind as they graduate college at rates far lower than their higher-income peers.²



THOSE WITH
A COLLEGE
DEGREE ARE:



3.5x less likely
to live in poverty⁵



24% more likely
to be employed⁶



And earn upward of
\$1.2M more
in their lifetime⁷

Strong communities start with college equity

When students from disinvested communities earn a bachelor's degree, especially those who are the first in their family to attend college, they are 24% more likely to be employed and 3.5 times less likely to live in poverty when compared with peers who don't attend college.⁵ Evidence shows that college graduates earn upward of \$1.2 million more in their lifetime, and have higher rates of civic engagement than their high school graduate peers.⁷

Evidence also shows that removing barriers to college access and success can create a more diverse and richer educational experience on college campuses. Removing these barriers also contributes to building a more diverse workforce, a critical factor in fueling greater innovation, stronger communities, and more equitable economic mobility.

⁵ "It's Not Just the Money: The Benefits of College Education to Individuals and to Society," 2015. <https://www.luminafoundation.org/resource/its-not-just-the-money/>

⁶ U.S. Bureau of Labor Statistics, 2019. <https://www.bls.gov/opub/ted/2019/44-6-percent-of-high-school-dropouts-and-72-3-percent-of-college-graduates-employed-in-august-2019.htm>

⁷ Lumina Foundation, "Stronger Nation Report," 2015. <https://www.luminafoundation.org/news-and-views/stronger-nation-2015/>

**"College Possible helped me grow
as a person and build a community
of people going through the very
same thing."**

Jasmyne,
Neumann University

**"My time with College Possible
definitely changed my outlook on
my future. I always knew I wanted
to go to college but I had no idea
how to apply. College Possible
helped me figure out the steps
I needed to take."**

Unique,
Murrell Dobbins Career and
Technical Education High School,
Cabrini University





We empower the college dream

At College Possible Philadelphia, we’re working to close the college degree divide. Since 2014, our college access and success programs have helped empower more than 1,500* students from disinvested communities on their path to a college degree. Our pioneering model matches eligible students with near-peer coaches and an intensive curriculum designed to help them overcome the most common barriers to getting into college and completing their degree — all at no cost to students or their families.

Through our partnerships with area high schools and college institutions, together we are advancing college equity for the greater Philadelphia community.

* Fiscal year 2021

WHAT SETS US APART:



Near-Peer Coaches

Students benefit from the relatability, recent experience and trusted relationships with our near-peer coaches who offer an intensive curriculum of personalized interventions.



6+ Years of Support

Students enrolled in our Core Program receive one of the longest support cycles available, starting their junior year in high school and continuing through degree completion.



Support for Unenrolled Students

Students who unenroll or stop out of college continue to receive coaching support to help them get back on track toward their college degree goal.



Free to Students

Thanks to the generous support of our funders and partners, our college access and success programs are offered at no cost to students or their families.



AmeriCorps

A PROUD AMERICORPS PROGRAM

AmeriCorps is a federal agency that brings people together to tackle the country’s most pressing challenges through national service. Our AmeriCorps members commit to a year of service as College Possible coaches in communities throughout the country. Many represent the identities of the students they serve, and each brings a commitment to social justice and closing the college equity divide.

College access and success programs offered in Philadelphia



Core Program

Our most comprehensive college access and success program. Eligible scholars receive at least six years of near-peer coaching support to navigate and overcome the most common barriers to getting into and through college.



Connects

Customized college partnerships to match, recruit, and support the college persistence and degree completion of College Possible students on partner campuses.



Partners in Success

A college access bootcamp model for partners who would like College Possible to facilitate college prep workshops centered around college knowledge, the application process and financial aid for a concentrated amount of time.

“My coaches always checked on me and gave me a sense of stability, (including) knowing that I had someone outside of my friends and family to lean on when needed.”

Kheyana,
Penn State Harrisburg



Over 20 years of national, evidence-based results

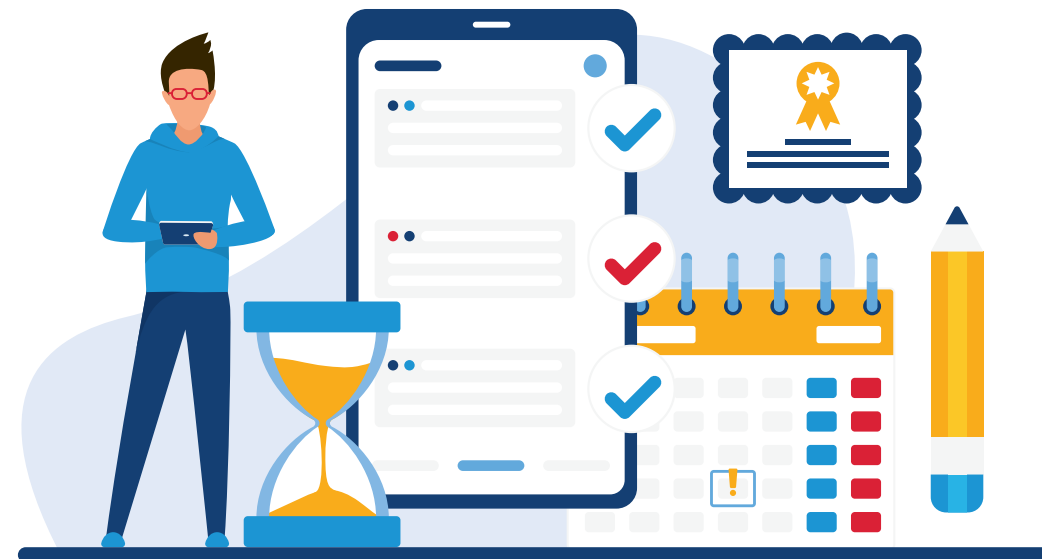
As one of the largest college access and success organizations in the country, our evidence-based programs have earned national credibility. Compared with their peers from similar backgrounds, College Possible students are **30% more likely** to enroll in college the year after high school graduation, and **three times more likely** to earn a bachelor's degree after graduating from high school.⁸

30%

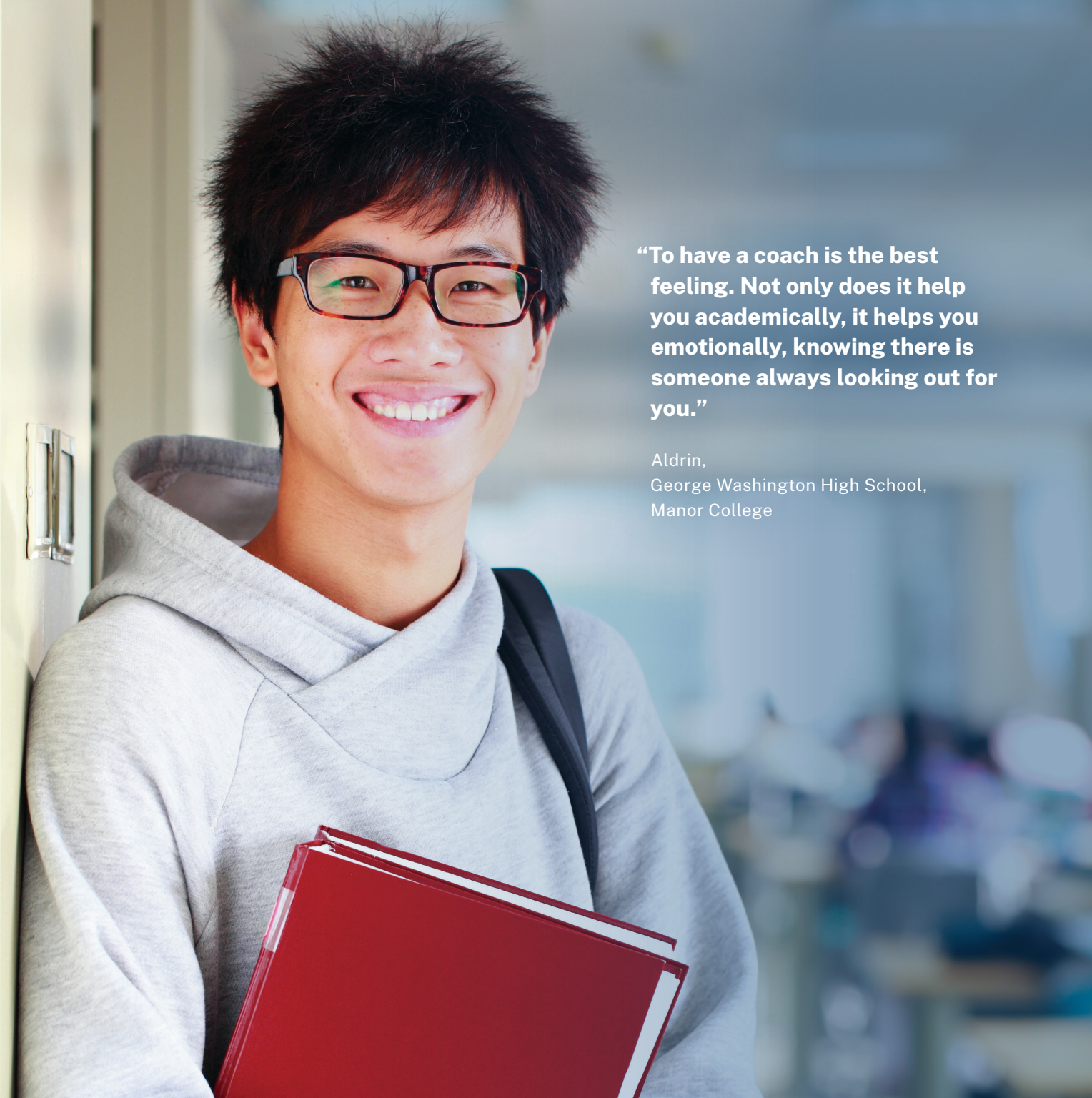
more likely to enroll in college the year after high school graduation

3x

more likely to earn a bachelor's degree after graduating high school



⁸ The Pell Institute for the Study of Opportunity in Higher Education. Indicators of Higher Education Equity in the United States. p 121. 2019. http://pellinstitute.org/indicators/reports_2019.shtml



“To have a coach is the best feeling. Not only does it help you academically, it helps you emotionally, knowing there is someone always looking out for you.”

Aldrin,
George Washington High School,
Manor College

“Because I was overwhelmed by balancing many rigorous courses, extracurricular activities, the college process and home, [my coach] helped me take a breather. She gave me time to express how I felt through the year and supported me on the sidelines.”

Davy-Anna,
Upper Darby High School,
Pennsylvania State University–University Park

“The future belongs to those who believe in the beauty of their dreams.”

Eleanor Roosevelt



THE COLLEGE POSSIBLE STUDENT JOURNEY

1 Explore and prepare

HIGH SCHOOL JUNIOR YEAR

- SAT prep
- College fit exploration
- Paying for college

2 Select, apply and finance

HIGH SCHOOL SENIOR YEAR

- Financial aid and scholarship applications
- College application and essay prep
- College visits and selection
- Housing and transportation

3 Transition to college

SUMMER BRIDGE

- Summer melt support
- Class enrollment
- Transition to school

4 Persist through graduation

COLLEGE YEARS

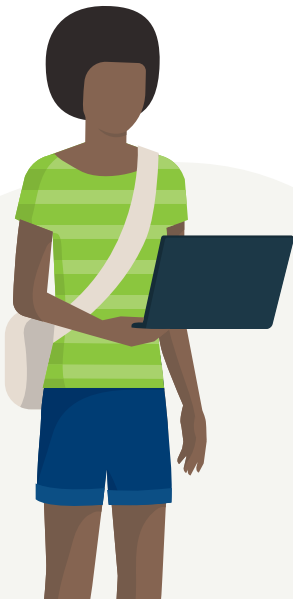
- Navigate complex college systems
- Access campus and community resources
- Form supportive peer and campus relationships
- Adjust to the rigors of the first year
- Stay on track academically
- Renew financial aid and scholarships
- Budget and manage time
- Explore mentorships, internships and job opportunities provided by our corporate partners

5 Transition to career

GRADUATION

- Secure internships and jobs
- Resume and interview prep

Near-peer coaches provide proactive, personalized support to help students **navigate and break through the most common barriers** on their path to a college degree





Learn more or get involved

PARTNER

To explore how a College Possible Philadelphia partnership can empower your students, contact our program team at PHLinfo@CollegePossible.org to schedule an informational meeting.

GIVE

If you believe that income and life circumstances should never keep young people from earning a college degree, consider making a donation. Your financial support helps us continue to expand our coaching and support throughout greater Philadelphia at no cost to enrolled students or their families. To make a donation, or to explore a broader funding partnership, visit CollegePossible.org/DonatePHL.

SERVE

If you know a current college student or recent grad interested in making a meaningful difference in the lives of youth, encourage them to explore a life-changing year of service as a College Possible Philadelphia AmeriCorps coach at CollegePossible.org/Serve.

APPLY

If you know an eligible student who dreams of attending college and would like free support to find their best-fit colleges, build strong college applications, finance their education, and persist through graduation, refer them to CollegePossible.org/Apply.



College Possible is proudly
supported by AmeriCorps

This material is based upon work supported by AmeriCorps grants. Opinions or points of view expressed in this document are those of the authors and do not necessarily reflect the official position of, or a position that is endorsed by, AmeriCorps.

CollegePossible.org/Philadelphia