



NAVIGATE PROGRAM OVERVIEW

Let's close  
the rural  
degree divide



COLLEGE  
POSSIBLE™  
NAVIGATE



# The growing college degree divide

A student’s future should be determined solely by their aspirations, motivation and effort, not by their zip code

Yet, nationwide, there’s a widening gap between the aspirations of students from underrepresented communities who want to earn a college degree and the systemic, unfair barriers they face in achieving it. Data shows that the further students live from urban centers, the less likely they are to have access to the resources they need to support their college aspirations.

While there is no single cause, contributors to this “degree divide” include inequitable academic prep, fragmented resources, complex college systems, and resource-constrained staff. Early evidence indicates that the COVID-19 pandemic has only widened these barriers, putting the diversity of our future workforce and equitable economic mobility at risk.

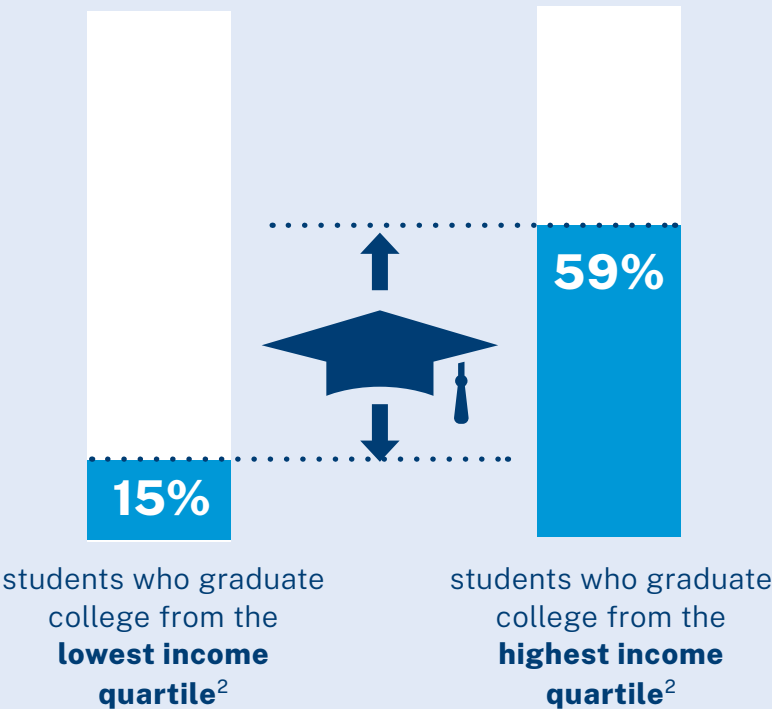
<sup>1</sup> Pew Research Center analysis of 1996 and 2016 National Postsecondary Student Aid Study (NPSAAS), National Center for Education Statistics, “A Rising Share of Undergraduates Are From Poor Families, Especially at Less Selective Colleges.”

<sup>2</sup> Pell Institute, “Indicators of Higher Education Equity in the United States: 2022 Historical Trend Report,” page 292.

## THE COLLEGE DEGREE DIVIDE

The number of college students who live in poverty or who are nonwhite has increased.<sup>1</sup>

Unfortunately, too many of them are still being left behind as they graduate college at rates far lower than their higher-income peers.<sup>2</sup>



THOSE WITH  
A COLLEGE  
DEGREE ARE:



**3.5x** less likely  
to live in poverty<sup>3</sup>



**24%** more likely  
to be employed<sup>4</sup>



And earn upward of  
**\$1.2M more**  
in their lifetime<sup>5</sup>

## Strong communities start with college equity

When students from underinvested communities earn a bachelor's degree, especially those who are the first in their family to attend college, they are 24% *more likely* to be employed and 3.5 times *less likely* to live in poverty when compared with peers who don't attend college.<sup>3</sup> Evidence shows that college graduates earn upward of \$1.2 million more in their lifetime, and have higher rates of civic engagement than their high school graduate peers.<sup>5</sup>

Evidence also shows that removing barriers to college access and success can create a more diverse and richer educational experience on college campuses. Removing these barriers also contributes to building a more diverse workforce, a critical factor in fueling greater innovation, stronger communities and more equitable economic mobility.

<sup>3</sup> "It's Not Just the Money: The Benefits of College Education to Individuals and to Society," 2015. <https://www.luminafoundation.org/resource/its-not-just-the-money/>

<sup>4</sup> U.S. Bureau of Labor Statistics, 2019. <https://www.bls.gov/opub/ted/2019/44-6-percent-of-high-school-dropouts-and-72-3-percent-of-college-graduates-employed-in-august-2019.htm>

<sup>5</sup> Lumina Foundation, "Stronger Nation Report," 2015. <https://www.luminafoundation.org/news-and-views/stronger-nation-2015/>

**"If there is one lesson I've learned from College Possible it's this: trust your purpose and lived experience. I can say with utmost certainty that College Possible changed the trajectory of my life for the better."**

Laura,  
Reynolds High School, Princeton University  
(Pictured)





# We empower the college dream

## Connecting students outside urban centers to proven college access and success programming

At College Possible Oregon, we're working to close the college degree divide. Since 2012, our college access and success programs have helped put more than 2,400\* students throughout Oregon on the path to a college degree. In 2015, we expanded our pioneering near-peer coaching model to students in rural communities and/or outside urban centers of Oregon via our hybrid, tech-connected Navigate partnerships.

As a Navigate partner, your school can match eligible students with a trained, tech-connected near-peer coach and an intensive curriculum designed to help students overcome the most common barriers to getting into college and completing their degree — all at no cost to students or their families.

\* Fiscal year 2021



AmeriCorps

### A PROUD AMERICORPS PROGRAM

AmeriCorps is a federal agency that brings people together to tackle the country's most pressing challenges through national service. Our AmeriCorps members commit to a year of service as College Possible coaches in communities throughout the country. Many represent the identities of the students they serve, and each brings a commitment to social justice and closing the college equity divide.

### WHAT SETS US APART:



#### Near-Peer Coaches

Students benefit from the relatability, recent experience and trusted relationship with our near-peer coaches who offer an intensive curriculum of personalized interventions.



#### Hybrid, Tech-Connected Support

Coaches use the latest in technology to deliver students an intensive curriculum of personalized, in-person and tech-connected support aligned to key milestones along the college journey.



#### 6+ Years of Support

Support to Navigate students starts in their junior year of high school, follows them to their college of choice and continues through degree completion.



#### Support for Unenrolled Students

Students who unenroll or stop out of college continue to receive coaching support to help them get back on track toward their college degree goal.



#### Free to Students

Thanks to the generous support of our funders and partners, our college access and success programs are offered at no cost to students or their families.

# Over 20 years of national, evidence-based results

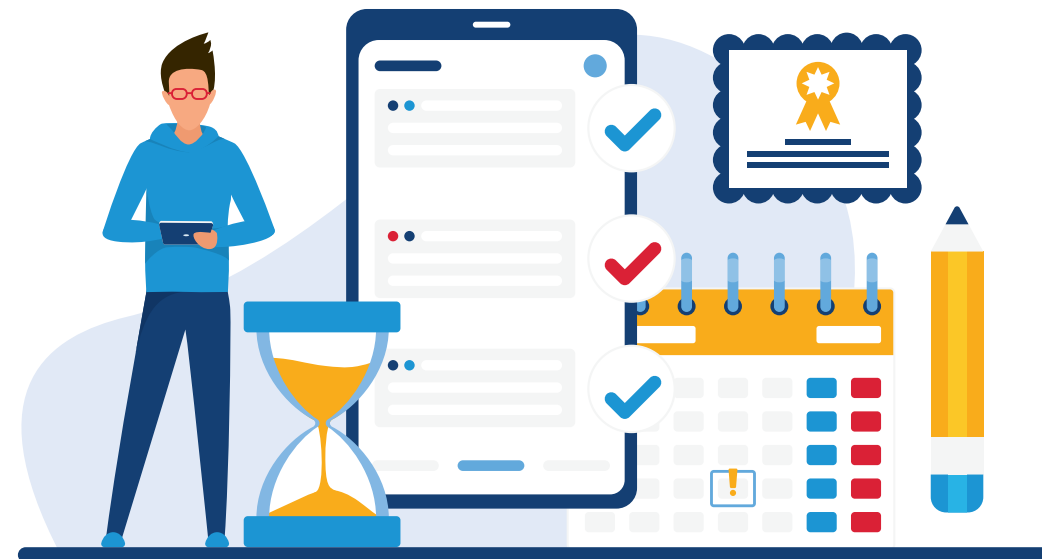
As one of the largest college access and success organizations in the country, our evidence-based programs have earned national credibility. Compared with their peers from similar backgrounds, College Possible students are **30% more likely** to enroll in college the year after high school graduation, and **three times more likely** to earn a bachelor's degree after graduating from high school.<sup>6</sup>

**30%**

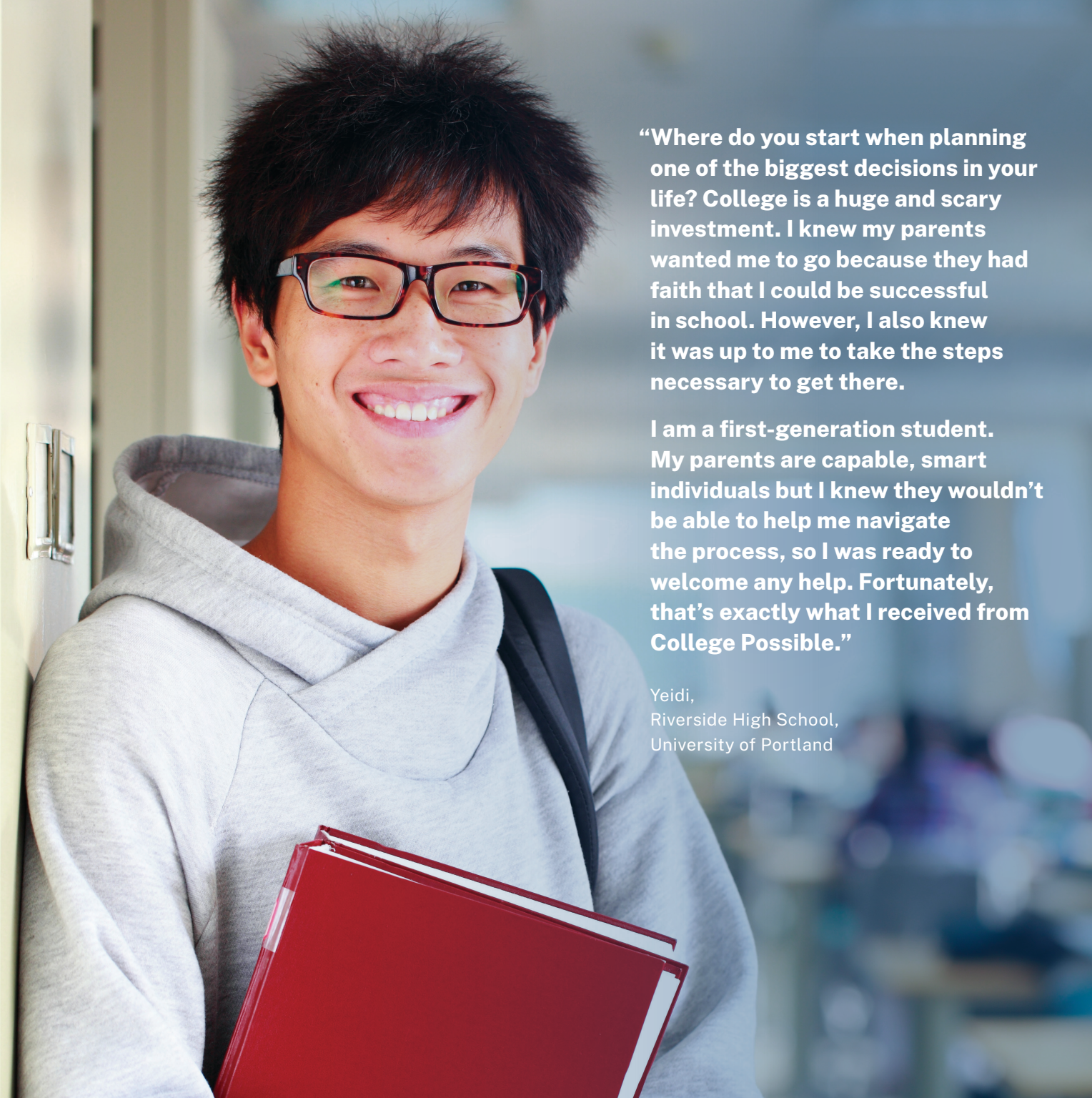
more likely to enroll in college the year after high school graduation

**3x**

more likely to earn a bachelor's degree after graduating high school



<sup>6</sup> The Pell Institute for the Study of Opportunity in Higher Education. Indicators of Higher Education Equity in the United States. p 121. 2019. [http://pellinstitute.org/indicators/reports\\_2019.shtml](http://pellinstitute.org/indicators/reports_2019.shtml)



“Where do you start when planning one of the biggest decisions in your life? College is a huge and scary investment. I knew my parents wanted me to go because they had faith that I could be successful in school. However, I also knew it was up to me to take the steps necessary to get there.

I am a first-generation student. My parents are capable, smart individuals but I knew they wouldn't be able to help me navigate the process, so I was ready to welcome any help. Fortunately, that's exactly what I received from College Possible.”

Yeidi,  
Riverside High School,  
University of Portland

# THE COLLEGE POSSIBLE STUDENT JOURNEY

## 1 Explore and prepare HIGH SCHOOL JUNIOR YEAR

- SAT prep
- College fit exploration
- Paying for college

## 2 Select, apply and finance HIGH SCHOOL SENIOR YEAR

- Financial aid and scholarship applications
- College application and essay prep
- College visits and selection
- Plan for housing and transportation

## 3 Transition to college SUMMER BRIDGE

- Class enrollment
- Transition to school

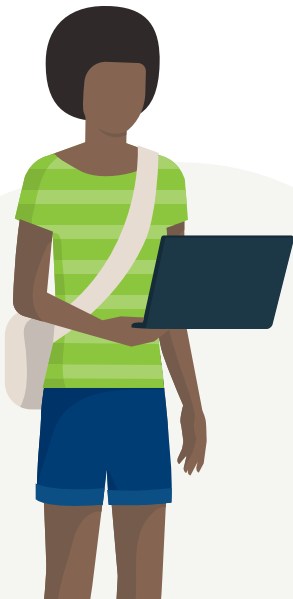
## 4 Persist through graduation COLLEGE YEARS

- Navigate complex college systems
- Access campus and community resources
- Form supportive peer and campus relationships
- Adjust to the rigors of the first year
- Stay on track academically
- Renew financial aid and scholarships
- Budget and manage time

## 5 Transition to career GRADUATION

- Explore internships and jobs
- Resume and interview prep

Near-peer coaches provide proactive, personalized interventions to help students **overcome the most common barriers** on their path to a college degree





# Learn more or get involved

## PARTNER

To explore how a College Possible Navigate partnership can empower your students, contact our College Success team at [OREGONinfo@CollegePossible.org](mailto:OREGONinfo@CollegePossible.org) to schedule an informational meeting.

## GIVE

Your financial support helps us continue to expand our coaching and support throughout Oregon at no cost to enrolled students or their families. To make a donation, or to explore a broader funding partnership, visit [CollegePossible.org/DonateOregon](https://CollegePossible.org/DonateOregon).

## SERVE

If you know a current college student or recent grad interested in making a meaningful difference in the lives of youth, encourage them to explore a life-changing year of service as a College Possible Oregon AmeriCorps coach at [CollegePossible.org/Serve](https://CollegePossible.org/Serve).

## APPLY

If you know an eligible student who dreams of attending college and would like free support to find their best-fit colleges, build strong college applications, finance their education, and persist through graduation, refer them to [CollegePossible.org/Apply](https://CollegePossible.org/Apply).



College Possible is proudly  
supported by AmeriCorps

This material is based upon work supported by AmeriCorps grants. Opinions or points of view expressed in this document are those of the authors and do not necessarily reflect the official position of, or a position that is endorsed by, AmeriCorps.

[CollegePossible.org/Oregon](https://CollegePossible.org/Oregon)